

VORTAC LFT	APP CRS	Rwy Ldg	5403
109.8	137°	TDZE	42
Chan 35		Apt Elev	42

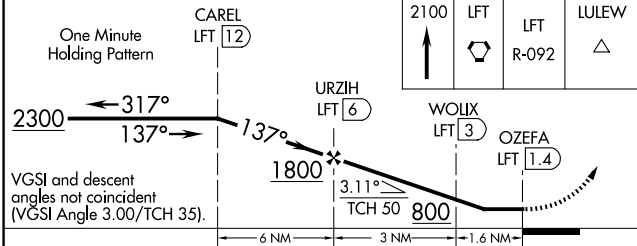
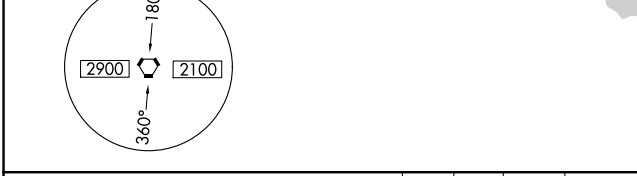
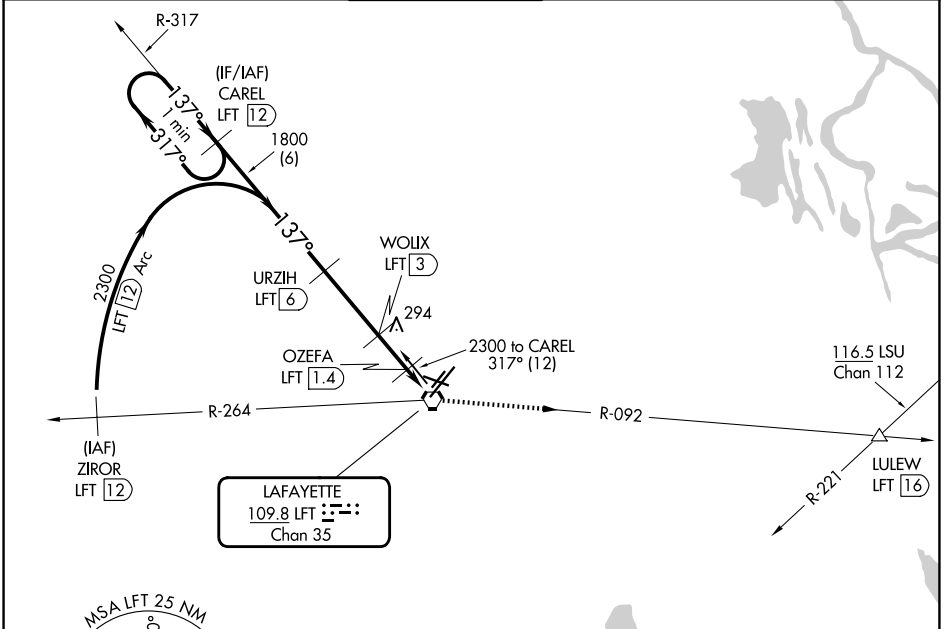
VOR/DME RWY 11

LAFAYETTE RGNI/PAUL FOURNET FLD (L.F.T)

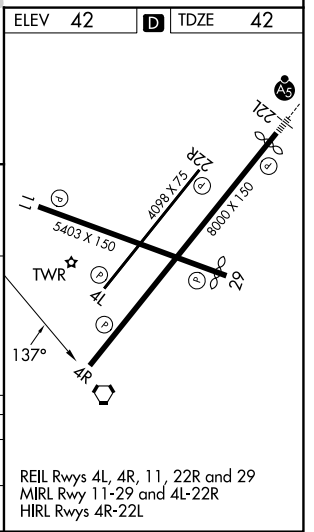
⚠ Procedure NA at night. Helicopter visibility reduction below 1 SM NA. When local altimeter setting not received, use Acadiana Rgnl altimeter setting and increase all MDAs 40 feet, increase Circling visibility Cat C/D ¼ SM.

MISSED APPROACH: Climb to 2100 to LFT VORTAC and on LFT VORTAC R-092 to LULEW/LFT 16 DME.

ATIS 134.05	LAFAYETTE APP CON ★ 121.1 363.0	LAFAYETTE TOWER ★ 118.5 (CTAF) 257.8	GND CON 121.8	UNICOM 122.95
-----------------------	---	--	-------------------------	-------------------------



CATEGORY	A	B	C	D
S-11	660-1	618 (700-1)	660-1¼ 618 (700-1¼)	660-2 618 (700-2)
CIRCLING	660-1	618 (700-1)	700-1¼ 658 (700-1¼)	700-2 658 (700-2)



SC-4, 11 JUN 2026 to 09 JUL 2026

SC-4, 11 JUN 2026 to 09 JUL 2026