

APP CRS <b>158°</b>	Rwy Ldg <b>4311</b>
	TDZE <b>289</b>
	Apt Elev <b>296</b>

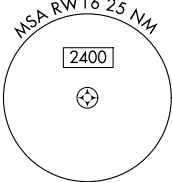
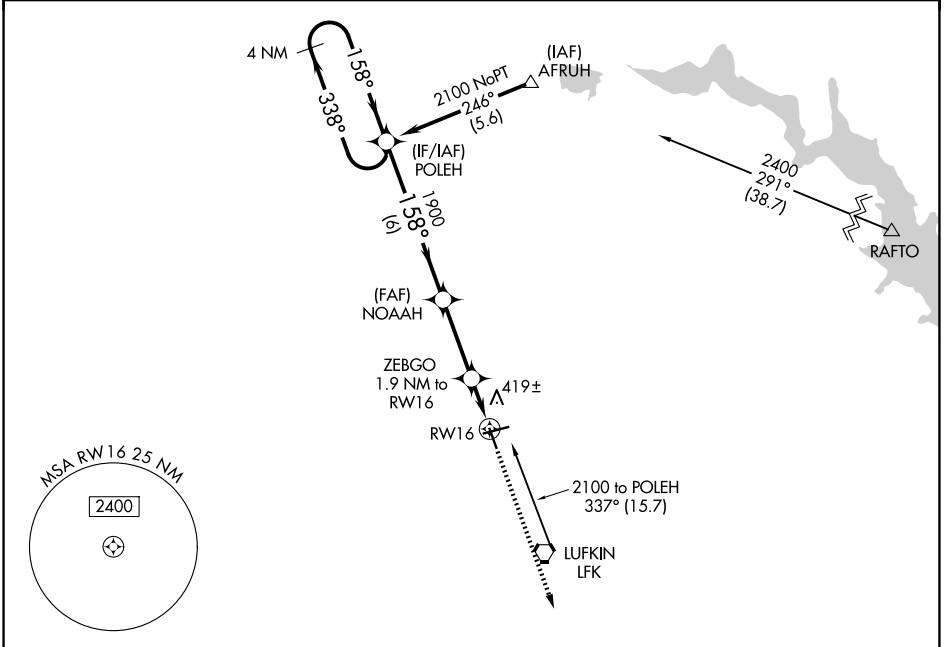
# RNAV (GPS) RWY 16

ANGELINA COUNTY (L.F.K)

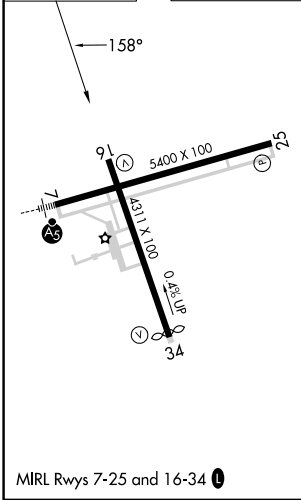
**⚠** DME/DME RNP-0.3 NA.  
**⚠** Straight in Rwy 16 NA at night, Circling Rwy 16, 25 NA at night.  
 Rwy 16 helicopter visibility reduction below 1 SM NA.

MISSED APPROACH: Climb to 2000 direct EXISE and hold.

ASOS <b>120.625</b>	HOUSTON CENTER <b>125.175 285.575</b>	UNICOM <b>123.0 (CTAF) 0</b>
------------------------	--	---------------------------------



ELEV 296	TDZE 289
----------	----------



4 NM Holding Pattern	POLEH	NOAAH	ZEBGO 1.9 NM to RW16	RW16	2000	EXISE
2100	← 338°	→ 158°	1900	3.00' ≥ TCH 48	940	
6 NM		3 NM		1.9 NM		
CATEGORY	A	B	C	D		
LNAV MDA	680-1	391 (400-1)	680-1½	391 (400-1½)		
CIRCLING	740-1 444 (500-1)	760-1 464 (500-1)	880-1½ 584 (600-1½)	1140-2¾ 844 (900-2¾)		

LUFKIN, TEXAS  
 Amdt 1 07DEC17

31°14'N-94°45'W

# ANGELINA COUNTY (L.F.K)

## RNAV (GPS) RWY 16

SC-5, 11 JUN 2026 to 09 JUL 2026

SC-5, 11 JUN 2026 to 09 JUL 2026