

APP CRS <b>338°</b>	Rwy Ldg TDZE Apt Elev	<b>4204</b> <b>286</b> <b>296</b>
------------------------	-----------------------------	---

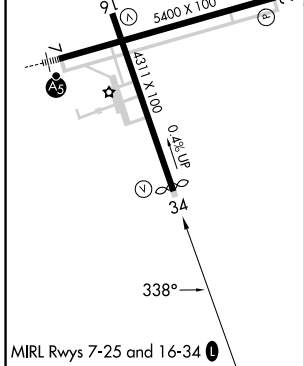
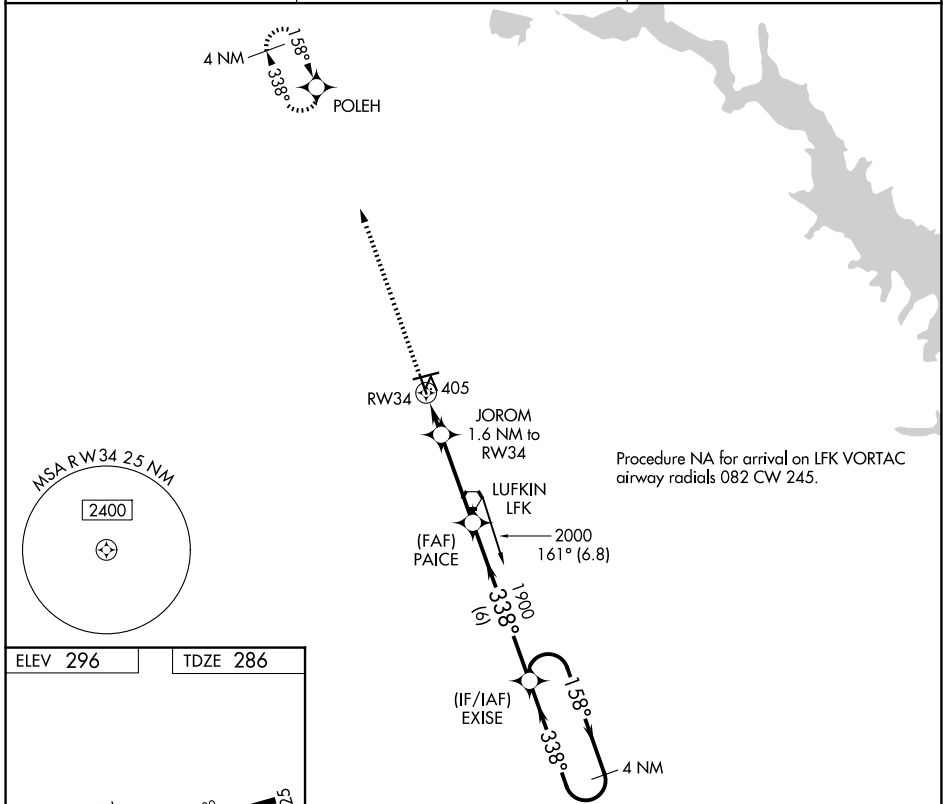
# RNAV (GPS) RWY 34

ANGELINA COUNTY (L'FK)

**▼** DME/DME RNP-0.3 NA. Circling Rwy 16, 25 NA at night.  
**▲** Rwy 34 helicopter visibility reduction below ¾ SM NA.

MISSED APPROACH: Climb to 2100 direct POLEH and hold.

ASOS <b>120.625</b>	HOUSTON CENTER <b>125.175 285.575</b>	UNICOM <b>123.0 (CTAF) 0</b>
------------------------	--	---------------------------------



2100 POLEH	JOROM 1.6 NM to RW34	PAICE	EXISE 4 NM Holding Pattern	
↑	1 NM to RW34	≤ 3.00° TCH 55	158° → 2000	
	1 NM	0.6	← 338°	
CATEGORY	A	B	C	D
LNAV MDA	660-1 374 (400-1)			
CIRCLING	740-1 444 (500-1)	760-1 464 (500-1)	880-1½ 584 (600-1½)	1140-2¾ 844 (900-2¾)

SC-5, 11 JUN 2026 to 09 JUL 2026

SC-5, 11 JUN 2026 to 09 JUL 2026