

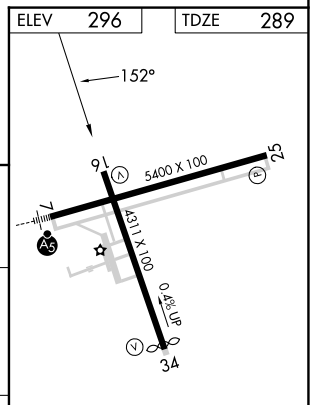
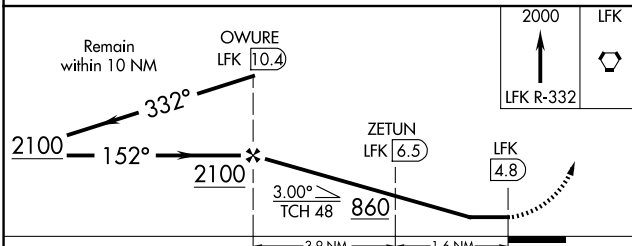
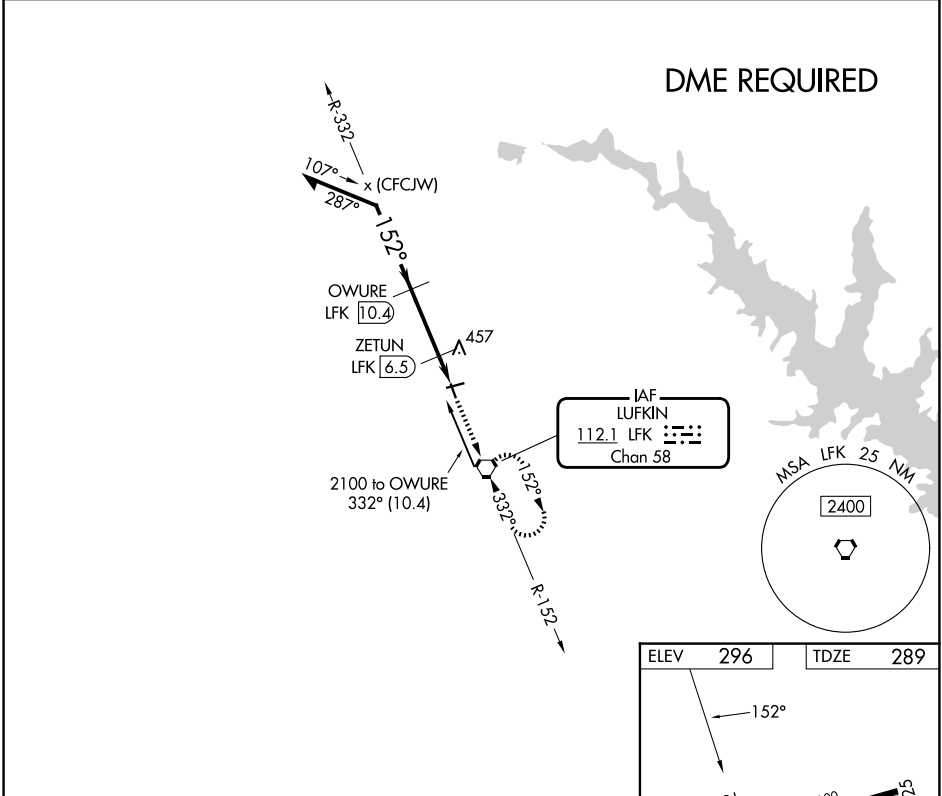
VORTAC LFK 112.1 Chan 58	APP CRS 152°	Rwy Ldg 4311 TDZE 289 Apt Elev 296
--	------------------------	---

VOR RWY 16
ANGELINA COUNTY (L'FK)

▼ Rwy 16 helicopter visibility reduction below 1 SM NA.
▲ DME Required. Straight-in Rwy 16 NA at night, Circling Rwy 16, 25 NA at night.

MISSED APPROACH: Climb to 2000 on LFK VORTAC R-332 to LFK VORTAC and hold.

ASOS 120.625	HOUSTON CENTER 125.175 285.575	UNICOM 123.0 (CTAF) 0
------------------------	--	--



CATEGORY	A	B	C	D
S-16	720-1 431 (500-1)		720-1¼ 431 (500-1¼)	
CIRCLING	740-1 444 (500-1)	760-1 464 (500-1)	880-1½ 584 (600-1½)	1140-2¾ 844 (900-2¾)

MIRL Rwy 7-25 and 16-34 **0**

SC-5, 11 JUN 2026 to 09 JUL 2026

SC-5, 11 JUN 2026 to 09 JUL 2026