

LOC/DME I-GRB <b>109.5</b> Chan <b>32</b>	APP CRS <b>242°</b>	Rwy Ldg <b>7699</b> TDZE <b>682</b> Apt Elev <b>695</b>
---	------------------------	---

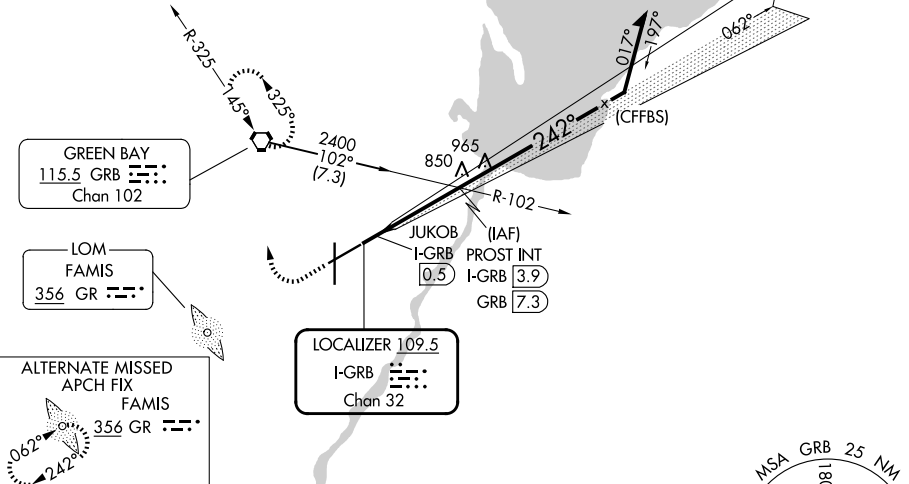
# LOC BC RWY 24

GREEN BAY/AUSTIN STRAUBEL INTL (GRB)

		MISSED APPROACH: Climb to 1500 then climbing right turn to 2500 direct GRB VORTAC and hold.	
ATIS <b>124.1</b>	GREEN BAY APP CON* <b>119.4 338.2</b>	GREEN BAY TOWER* <b>118.7(CTAF) 257.8</b>	GND CON <b>121.9</b>

Procedure NA for arrival on GRB VORTAC  
airway radials 085 CW 161.

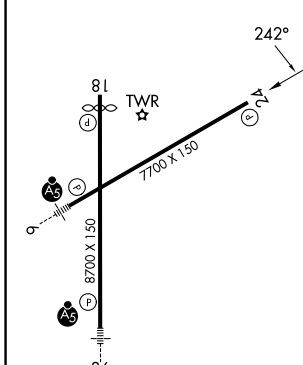
## BACK COURSE



EC-3, 11 JUN 2026 to 09 JUL 2026

EC-3, 11 JUN 2026 to 09 JUL 2026

ELEV 695	<b>D</b>	TDZE 682
----------	----------	----------



1500	2500	GRB	PROST INT I-GRB 3.9	Remain within 10 NM
Disregard GS indications.				
JUKOB I-GRB 0.5		2400		
2100		242°		
TCH 50		Use I-GRB DME when on the localizer course.		
0.7		3.4 NM		

	A	B	C	D
5-24	1100-1 418 (500-1)		1100-1½ 418 (500-1½)	
CIRCLING	1200-1 505 (600-1)		1300-1¾ 605 (700-1¾)	1300-2 605 (700-2)