

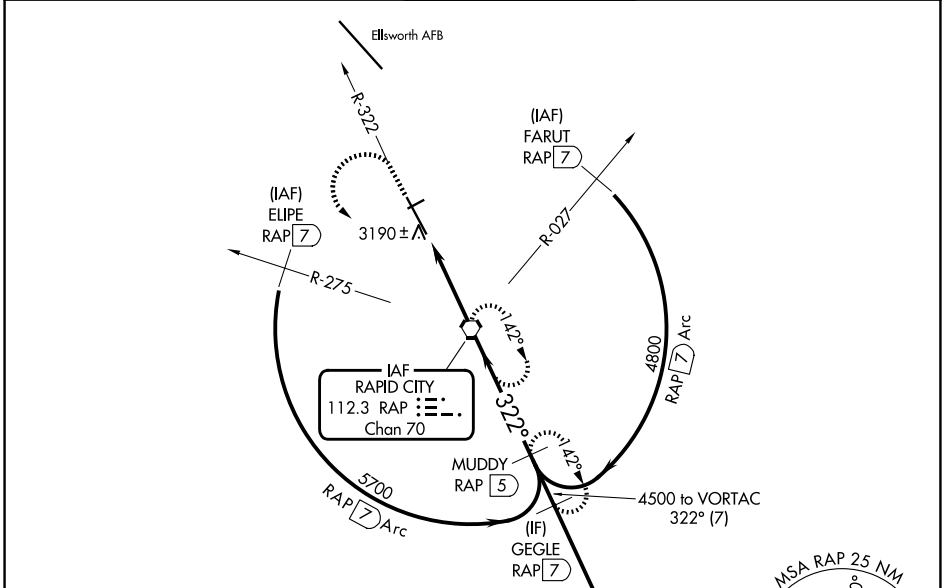
VORTAC RAP <b>112.3</b> Chan <b>70</b>	APP CRS <b>322°</b>	Rwy Ldg <b>8701</b> TDZE <b>3160</b> Apt Elev <b>3204</b>
--	------------------------	---

# VOR or TACAN RWY 32

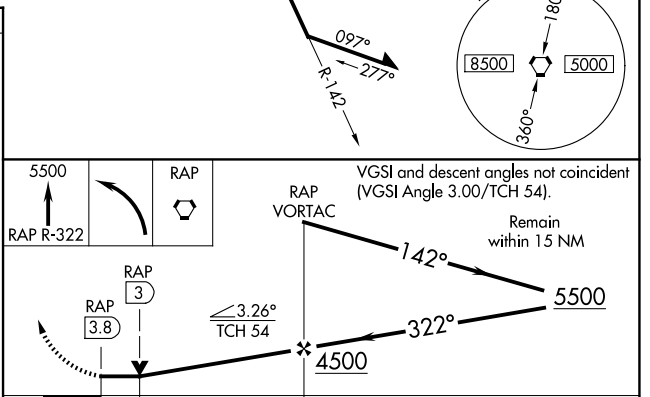
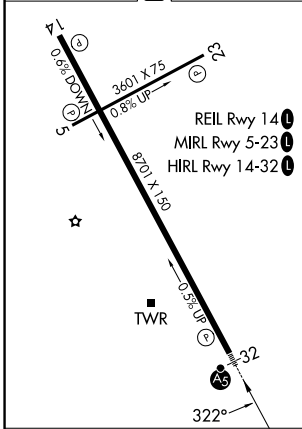
RAPID CITY RGNL (RAP)

<p>For inoperative ALS, increase S-32 all Cats visibility to 1 SM.</p>	<p>MALSR</p>	<p>MISSED APPROACH: Climb to 5500 on RAP R-322 then left turn direct RAP VORTAC and hold. (TACAN aircraft continue on RAP R-142 to MUDDY/RAP 5 DME and hold SE, RT, 322° inbound.)</p>

ASOS <b>118.525</b>	ELLSWORTH APP CON ★ <b>119.5 259.1</b>	RAPID CITY TOWER ★ <b>125.85 (CTAF) 0 257.8</b>	GND CON <b>121.9</b>	UNICOM <b>122.95</b>
------------------------	---	--	-------------------------	-------------------------



ELEV 3204	D	TDZE 3160
-----------	---	-----------



CATEGORY	A	B	C	D	E
S-32	3440/40 280 (300-¾)				
CIRCLING	3660-1 456 (500-1)	3840-1 636 (700-1)	3860-1¾ 656 (700-1¾)	3940-2¼ 736 (700-2¼)	3960-2¾ 756 (800-2¾)

NC-1, 11 JUN 2026 to 09 JUL 2026

NC-1, 11 JUN 2026 to 09 JUL 2026