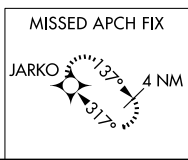
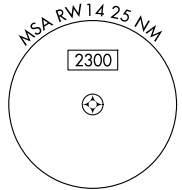
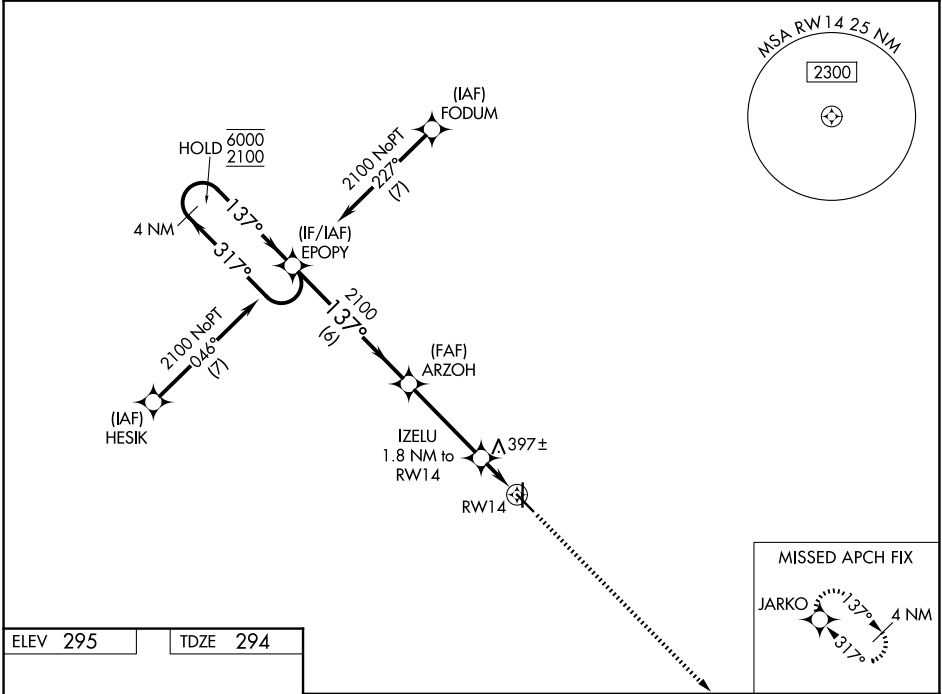


WAAS CH 61315 W14A	APP CRS 137°	Rwy Ldg TDZE Apt Elev	5001 294 295
--	------------------------	-----------------------------	---

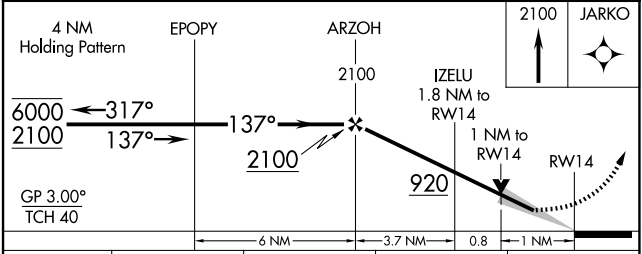
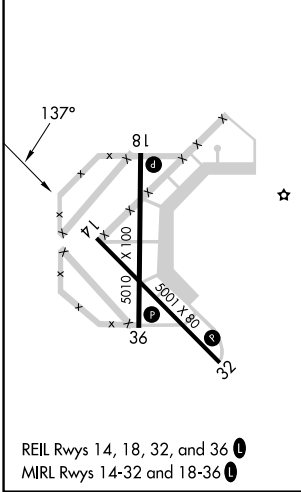
RNAV (GPS) RWY 14

MALDEN RGNL (M.A.W)

RNP APCH - GPS.		MISSED APPROACH: Climb to 2100 direct JARKO and hold.	
<p>▼ For uncompensated Baro-VNAV systems, LNAV/VNAV ▲ NA below -15°C or above 54°C.</p>			
AWOS-3PT 119.825	MEMPHIS CENTER 133.65 292.15	GCO 135.075	UNICOM 122.8 (CTAF) ①



ELEV 295	TDZE 294
----------	----------



CATEGORY	A	B	C	D
LPV DA	494-1	200 (200-1)		NA
LNAV/VNAV DA	544-1	250 (300-1)		NA
LNAV MDA	660-1	366 (400-1)		NA
CIRCLING	720-1 425 (500-1)	800-1 505 (600-1)	800-1½ 505 (600-1½)	NA

NC-3, 11 JUN 2026 to 09 JUL 2026

NC-3, 11 JUN 2026 to 09 JUL 2026