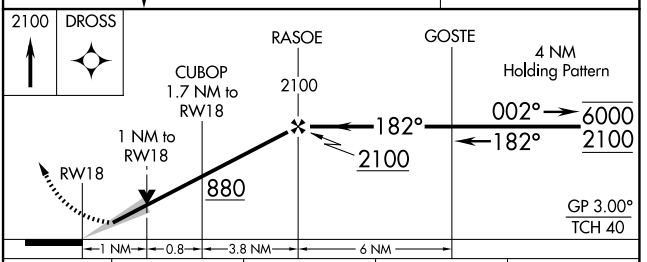
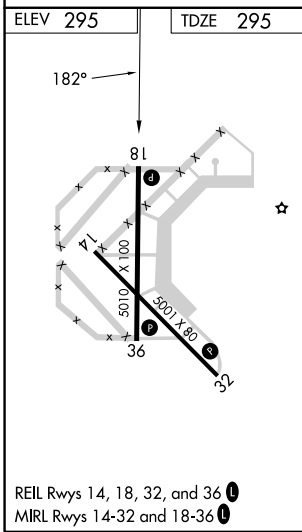
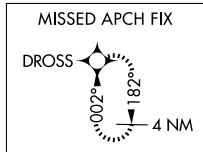
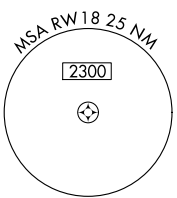
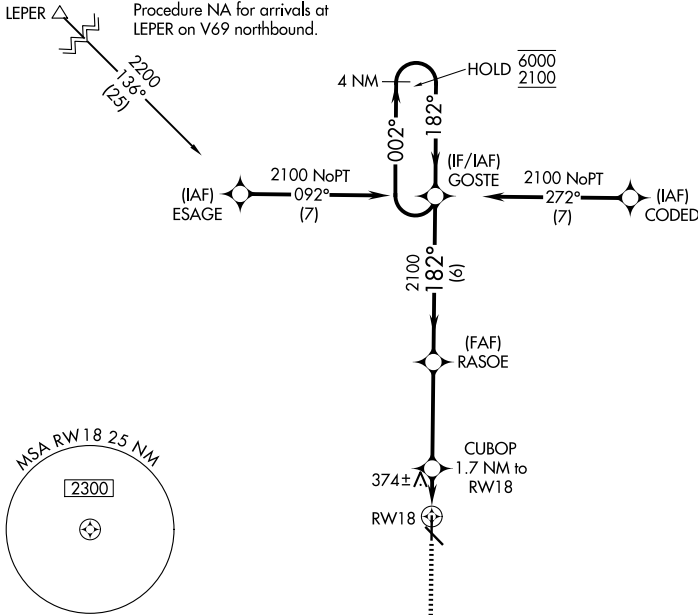


WAAS CH 78315 W18A	APP CRS 182°	Rwy Ldg TDZE Apt Elev	5010 295 295
--	------------------------	-----------------------------	---

RNAV (GPS) RWY 18

MALDEN RGNL (M.A.W)

RNP APCH - GPS.		MISSED APPROACH: Climb to 2100 direct DROSS and hold.	
<p>▼ For uncompensated Baro-VNAV systems, LNAV/VNAV ▲ NA below -15°C or above 54°C.</p>			
AWOS-3PT 119.825	MEMPHIS CENTER 133.65 292.15	GCO 135.075	UNICOM 122.8 (CTAF) 0



CATEGORY	A	B	C	D
LPV DA		495-1 200 (200-1)		NA
LNAV/VNAV DA		545-1 250 (300-1)		NA
LNAV MDA		640-1 345 (400-1)		NA
CIRCLING	720-1 425 (500-1)	800-1 505 (600-1)	800-1½ 505 (600-1½)	NA

NC-3, 11 JUN 2026 to 09 JUL 2026

NC-3, 11 JUN 2026 to 09 JUL 2026