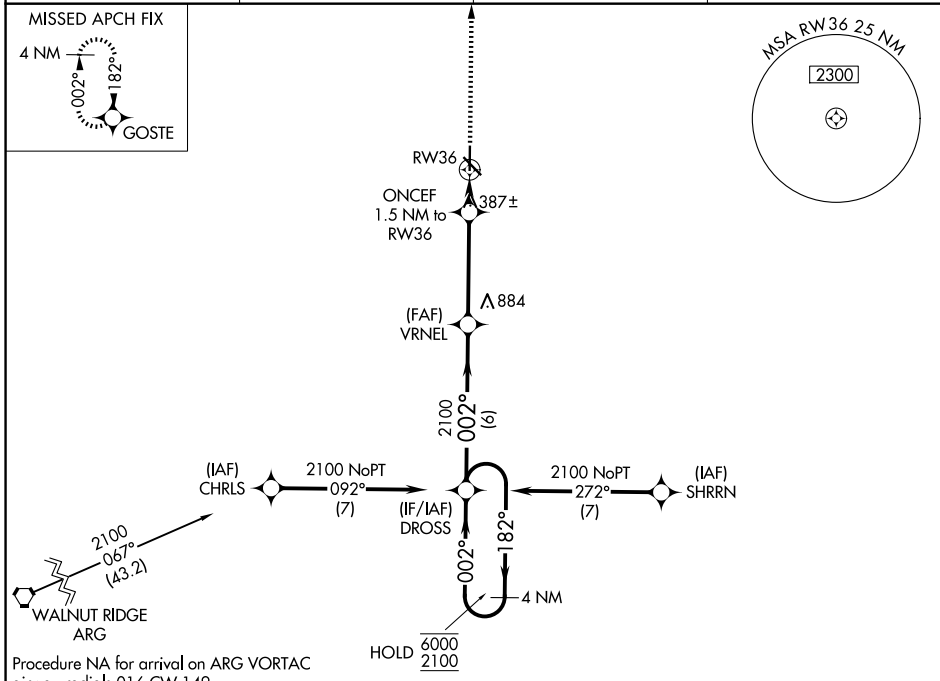


WAAS CH 93815 W36A	APP CRS 002°	Rwy Ldg 5010
		TDZE 295
		Apt Elev 295

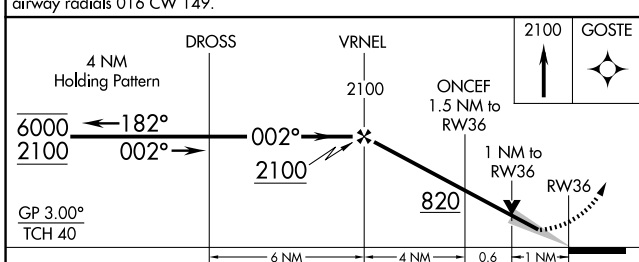
RNAV (GPS) RWY 36

MALDEN RGNL (M.A.W)

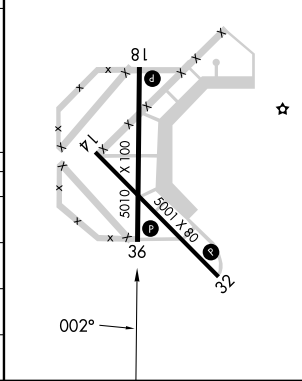
RNP APCH - GPS.		MISSED APPROACH: Climb to 2100 direct GOSTE and hold.	
<p>⚠ For uncompensated Baro-VNAV systems, LNAV/VNAV NA below -15°C or above 54°C.</p>			
AWOS-3PT 119.825	MEMPHIS CENTER 133.65 292.15	GCO 135.075	UNICOM 122.8 (CTAF)



Procedure NA for arrival on ARG VORTAC airway radials 016 CW 149.



ELEV 295	TDZE 295
REIL Rwy 14, 18, 32, and 36	
MIRL Rwy 14-32 and 18-36	



CATEGORY	A	B	C	D
LPV DA		495-1 200 (200-1)		NA
LNAV/VNAV DA		545-1 250 (300-1)		NA
LNAV MDA		640-1 345 (400-1)		NA
CIRCLING	720-1 425 (500-1)	800-1 505 (600-1)	800-1½ 505 (600-1½)	NA

NC-3, 11 JUN 2026 to 09 JUL 2026

NC-3, 11 JUN 2026 to 09 JUL 2026