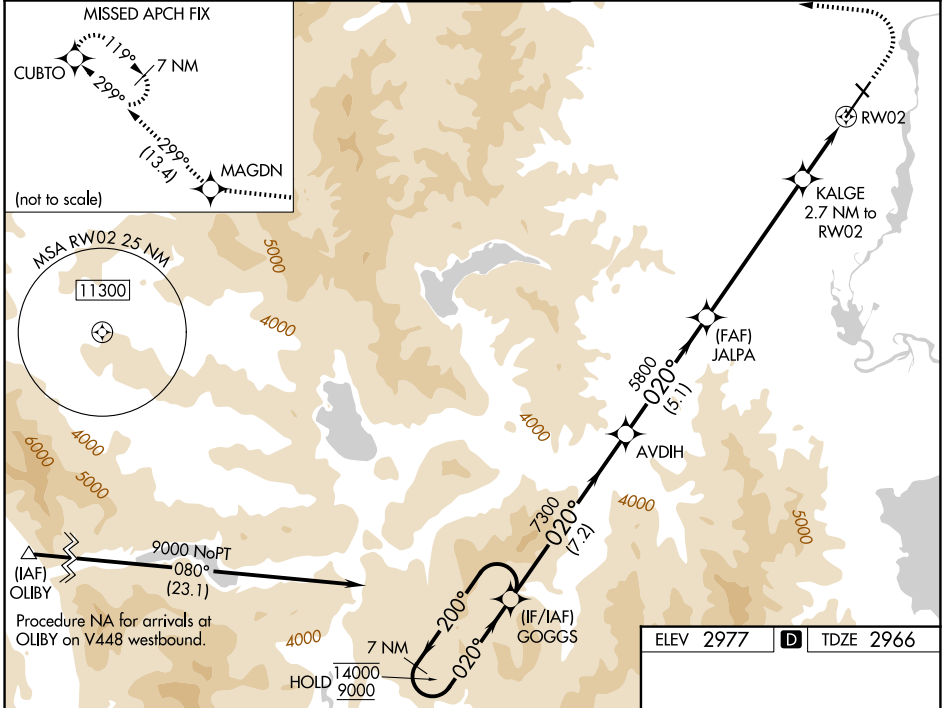


WAAS CH 70799 W02A	APP CRS 020°	Rwy Ldg 9007 TDZE 2966 Aprt Elev 2977
--	------------------------	--

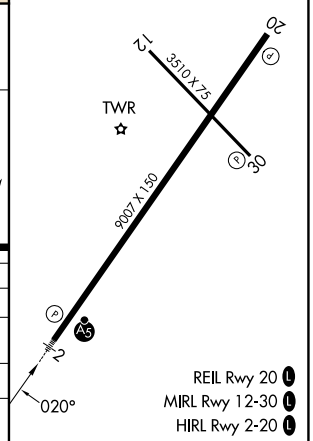
RNAV (GPS) Z RWY 2

GLACIER PARK INTL (GPI)

RNP APCH - GPS.		MALSR 	MISSED APPROACH: (Do not exceed 185K until CUBTO) Climb to 4200 then climbing left turn 9200 direct MAGDN and on track 299° to CUBTO and hold, continue climb-in-hold to 9200.			
For uncompensated Baro-VNAV systems, LNAV/VNAV NA below -24°C or above 54°C. For inop ALS, increase LNAV/VNAV all Cats visibility, and LNAV Cats C and D visibility to 1 3/8 SM. -1.4°C			ATIS 132.625	SALT LAKE CENTER 127.075 244.875	GLACIER TOWER ★ 124.55 (CTAF)	GND CON 121.6



	7 NM Holding Pattern	GOGGS	AVDIH	JALPA	KALGE 2.7 NM to RW02	tr 299°	CUBTO
	14000 ← 200°	9000 → 020°	7300	5800	3880		
	GP 3.00°	TCH 51					
CATEGORY	A	B	C	D			
LPV DA		3166-1/2	200 (200-1/2)				
LNAV/VNAV DA		3468-1	502 (500-1)				
LNAV MDA	3440-1/2	474 (500-1/2)	3440-1	474 (500-1)			
CIRCLING	3480-1 503 (600-1)	3580-1 603 (700-1)	3680-2 703 (800-2)	3760-2 1/2 783 (800-2 1/2)			



NW-1, 11 JUN 2026 to 09 JUL 2026

NW-1, 11 JUN 2026 to 09 JUL 2026