

VOR/DME FCA 113.2 Chan 79	APP CRS 316°	Rwy Ldg TDZE 3510 2974 Apt Elev 2977
---	------------------------	--

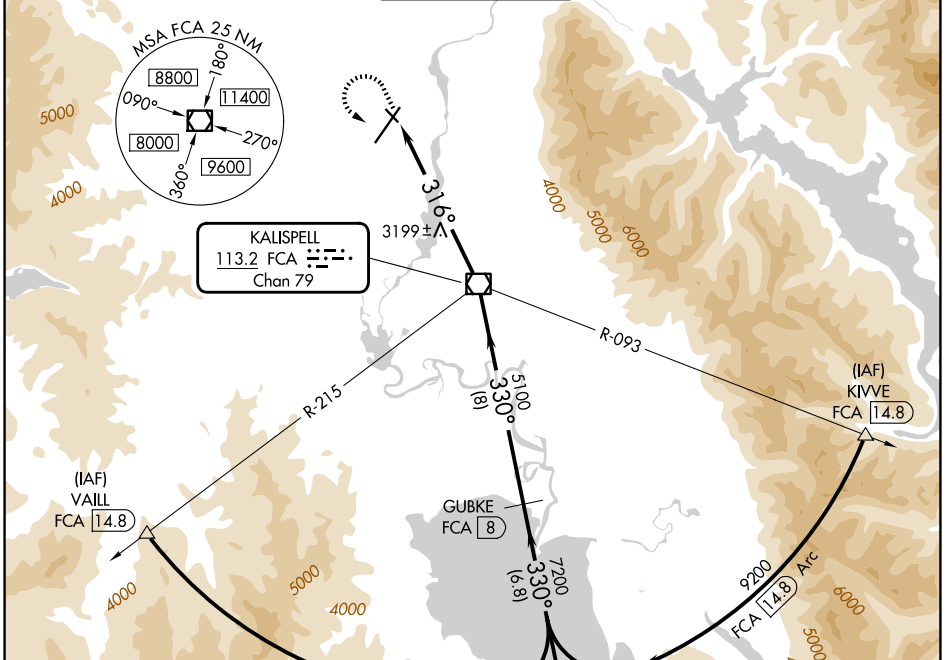
VOR/DME RWY 30

GLACIER PARK INTL (GPI)

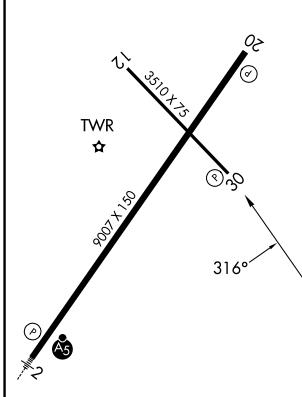
⚠ Rwy 30 helicopter visibility reduction below $\frac{3}{4}$ SM NA.
⚠ -14°C

MISSED APPROACH: Climb to 4000 then climbing left turn to 9300 via heading 130° and FCA VOR/DME R-150 to ITONE/14.8 DME and hold, continue climb-in-hold to 9300.

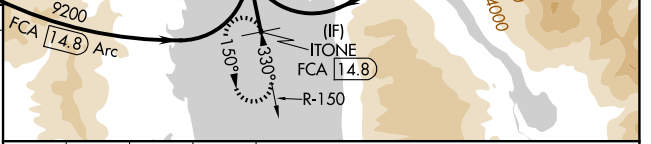
ATIS 132.625	SALT LAKE CENTER 127.075 244.875	GLACIER TOWER* 124.55 (CTAF) 0	GND CON 121.6	UNICOM 122.95
------------------------	--	--	-------------------------	-------------------------



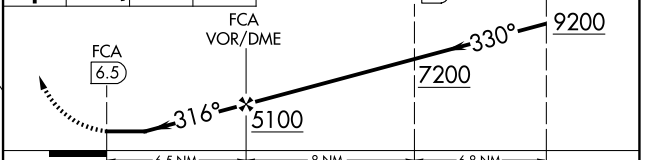
ELEV 2977 **D** TDZE 2974



REIL Rwy 20 **1**
 MIRL Rwy 12-30 **1**
 HIRL Rwy 2-20



4000	9300	FCA R-150	ITONE FCA 14.8	Descent angles NA.	ITONE FCA 14.8
------	------	-----------	----------------	--------------------	----------------



CATEGORY	A	B	C	D
S-30	3480-1	506 (600-1)	3480-1½	506 (600-1½)
CIRCLING	3520-1 543 (600-1)	3580-1 603 (700-1)	3680-2 703 (800-2)	3760-2½ 783 (800-2½)

NW-1, 11 JUN 2026 to 09 JUL 2026

NW-1, 11 JUN 2026 to 09 JUL 2026