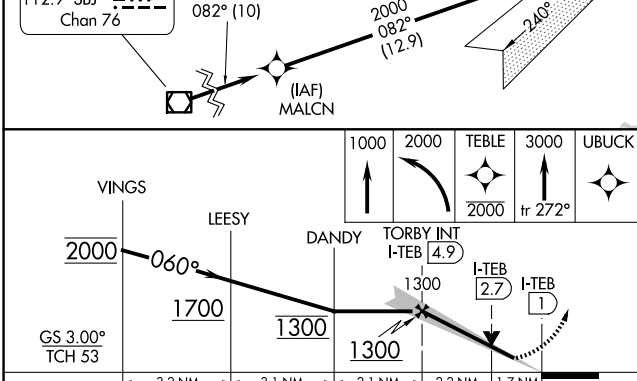
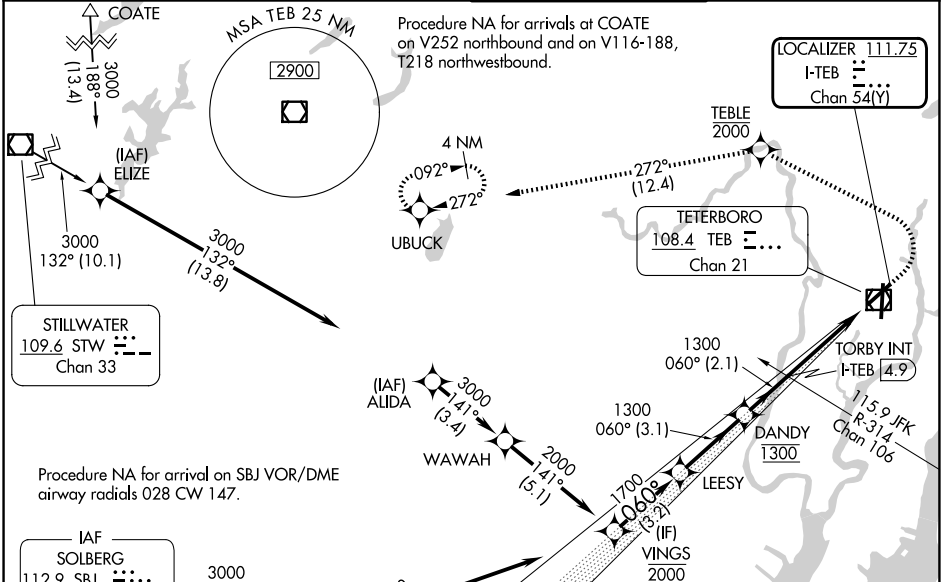


LOC/DME I-TEB	APP CRS	Rwy Ldg	<b>6014</b>
<b>111.75</b>	<b>060°</b>	TDZE	<b>5</b>
Chan <b>54(Y)</b>		Apt Elev	<b>8</b>

# ILS Z or LOC Z RWY 6

TETERBORO (TEB)

RNP APCH - GPS.		MALSR		MISSED APPROACH: Climb to 1000, then climbing left turn to 2000 direct TEBLE, cross TEBLE at or below 2000, then climb to 3000 on track 272° to UBUCK and hold.
RADAR required.		AS		
<p>▼ Rwy 6 helicopter visibility reduction below RVR 4000 NA. Circling NA for Cats B, C and D northwest of Rwy 6 and west of Rwy 19. Inop table does not apply to S-ILS-6 all Cats.</p> <p>▲ When Circling to Rwy 24 at night, operational VGS1 required, remain on or above VGS1 glidepath until threshold. For inop ALS, increase S-LOC 6 Cats A/B visibility to RVR 5500.</p>				
D-ATIS	NEWARK APP CON	TETERBORO TOWER	GND CON	
<b>114.2 132.85</b>	<b>127.6 379.9</b>	<b>119.5</b>	<b>121.9</b>	



ELEV 8	D	TDZE 5
--------	---	--------

6011 X 150

6997 X 150

TWR

AS

060°

61

159 JFK R-314 Chan 106

CATEGORY	A	B	C	D
S-ILS 6	255/40		250 (300-¾)	
S-LOC 6	600/40	595 (600-¾)	600-1¼	595 (600-1¼)
CIRCLING	760-1	752 (800-1)	820-2½ 812 (900-2½)	1040-3 1032 (1100-3)

FAF to MAP 3.9 NM					
Knots	60	90	120	150	180
Min:Sec	3:54	2:36	1:57	1:34	1:18

TDZL/RCLS Rws 6 and 19  
REIL Rws 1, 6, 19 and 24  
HIRL Rws 1-19 and 6-24

NE-2, 11 JUN 2026 to 09 JUL 2026

NE-2, 11 JUN 2026 to 09 JUL 2026