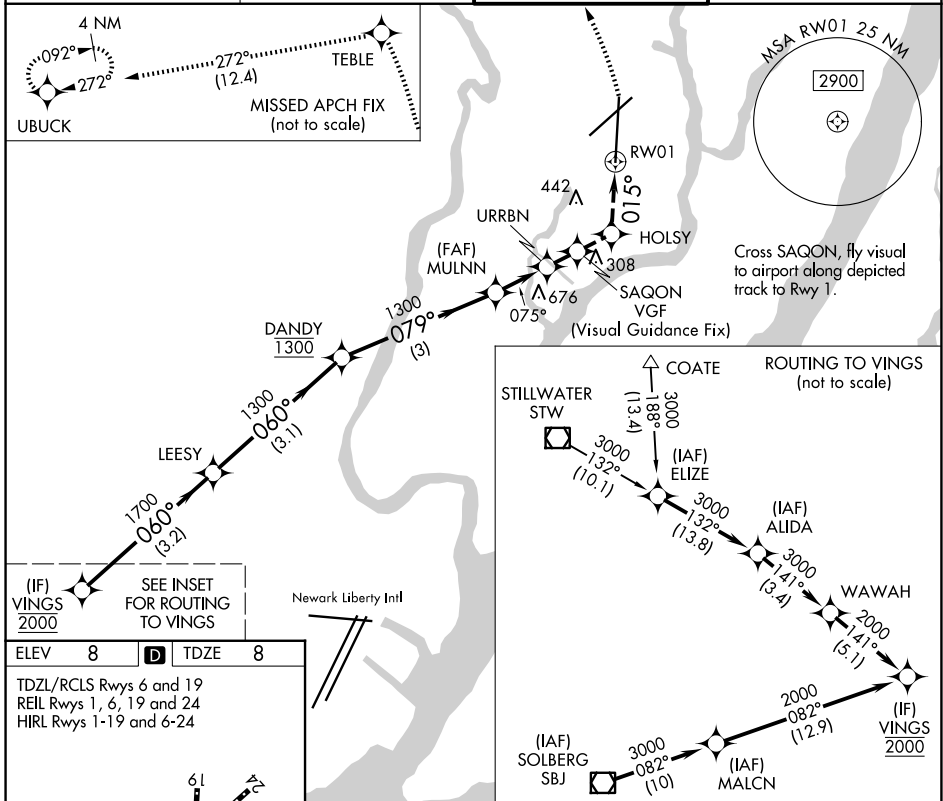


APP CRS	Rwy Ldg	<b>6159</b>
<b>015°</b>	TDZE	<b>8</b>
	Apt Elev	<b>8</b>

# RNAV (GPS) RWY 1

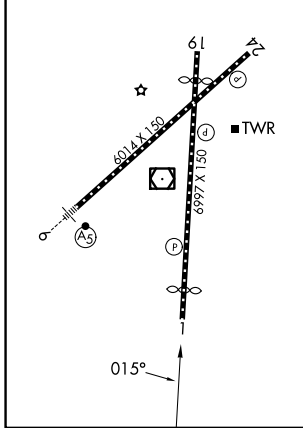
TETERBORO (TEB)

RNP APCH - GPS. RADAR required.		MISSED APPROACH: Climb to 1300 on the FMS lateral path to Rwy 1 then climbing left turn to at or below 2000 direct TEBLE then climbing left turn to 3000 on track 272° to UBUCK and hold.	
▼ Inop table does not apply. ▲ Rwy 1 helicopter visibility reduction NA.			
D-ATIS <b>114.2 132.85</b>	NEWARK APP CON <b>127.6 379.9</b>	TETERBORO TOWER <b>119.5</b>	GND CON <b>121.9</b>



(IF) VINGS 2000  
SEE INSET FOR ROUTING TO VINGS

ELEV 8	<b>D</b>	TDZE 8
TDZL/RCLS Rws 6 and 19 REIL Rws 1, 6, 19 and 24 HIRL Rws 1-19 and 6-24		



Turns required in the visual segment.					1300	FMS Lateral to RW01	2000	TEBLE	3000	UBUCK	
					↑	↔	↙	↘	↖	↗	
								tr 272°			
					* Recommended altitude.						
VINGS	LEESY	DANDY	MULNN	URRBN	SAQON	HOLSY	RW01				
2000	1700	1300	1300	1300	760	*534					
					3.10° TCH 56						
					060°	079°	075°				
					3.2 NM	3.1 NM	3 NM	1 NM	0.6	0.7	1.4 NM
CATEGORY	A		B		C		D				
LNAV MDA	760-2½		752 (800-2½)		760-3		752 (800-3)				

NE-2, 11 JUN 2026 to 09 JUL 2026

NE-2, 11 JUN 2026 to 09 JUL 2026