

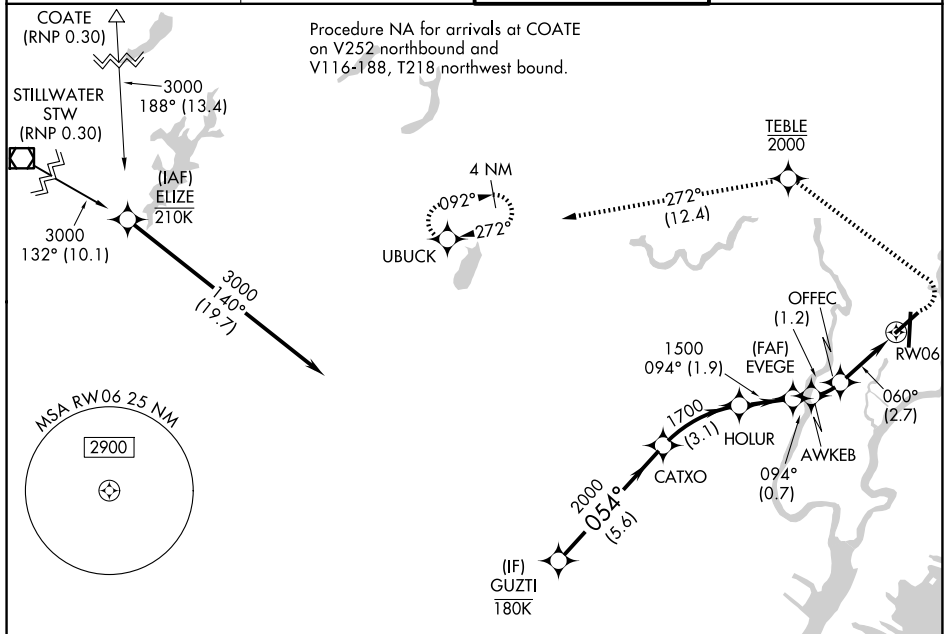
APP CRS	Rwy Ldg	6014
060°	TDZE	6
	Apt Elev	8

RNAV (RNP) Z RWY 6

TETERBORO (TEB)

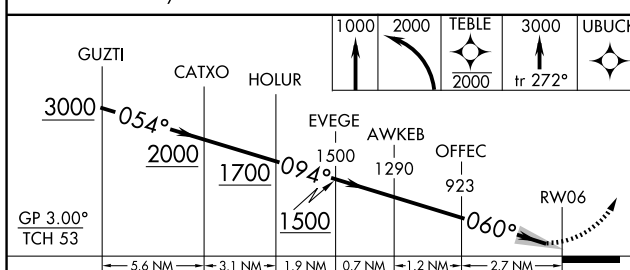
RNP AR APCH - GPS. RADAR required.	MALSR	MISSED APPROACH: Climb to 1000, then climbing left turn to 2000 direct TEBLE, cross TEBLE at or below 2000, then climb to 3000 on track 272° to UBUCK and hold.
▼ For uncompensated Baro-VNAV systems, procedure NA below -13°C or above 54°C. For inop ALS, increase RNP 0.30 all Cats visibility to 1½ SM.		

D-ATIS 114.2 132.85	NEWARK APP CON 127.6 379.9	TETERBORO TOWER 119.5	GND CON 121.9
-------------------------------	--------------------------------------	---------------------------------	-------------------------

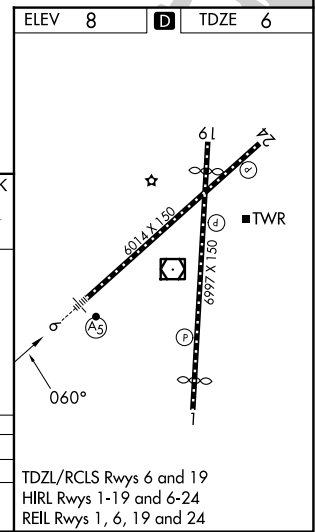


NE-2, 11 JUN 2026 to 09 JUL 2026

NE-2, 11 JUN 2026 to 09 JUL 2026



CATEGORY	A	B	C	D
RNP 0.30 DA		679-1½	673 (700-1½)	



AUTHORIZATION REQUIRED