

WAAS CH 49043 W19B	APP CRS 182°	Rwy Ldg TDZE Apt Elev	6230 6 8
--	------------------------	-----------------------------	-------------------------------------

RNAV (GPS) X RWY 19

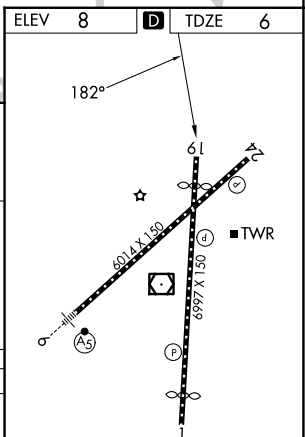
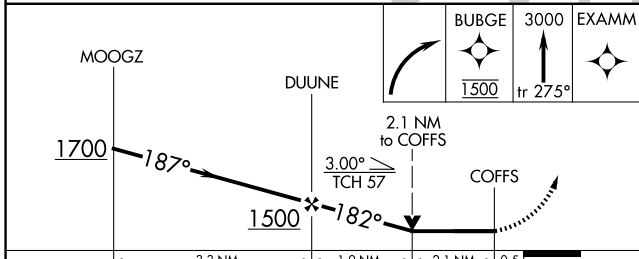
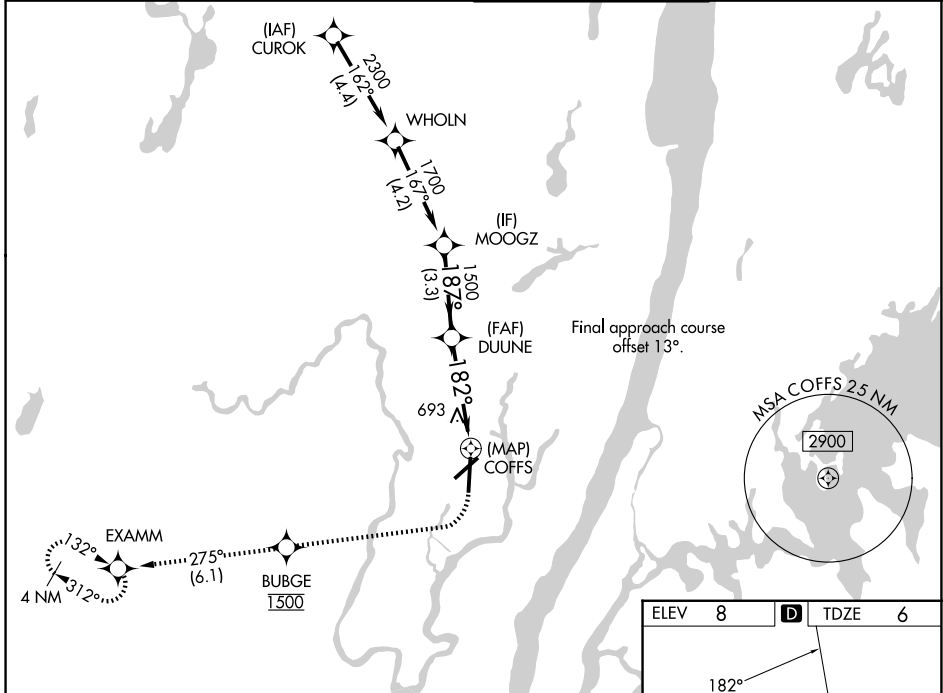
TETERBORO (TEB)

RNP APCH. RADAR required.

⚠ Rwy 19 helicopter visibility reduction below 3/4 SM NA. Circling NA for Cats B, C, D northwest of Rwy 06-19. When Circling to Rwy 24 at night, operational VGSI required, remain on or above the VGSI glidepath until threshold.

MISSED APPROACH: Climbing right turn direct BUBGE, cross BUBGE at 1500, then climb to 3000 on track 275° to EXAMM and hold, continue climb-in-hold to 3000.

D-ATIS 114.2 132.85	NEWARK APP CON 127.6 379.9	TETERBORO TOWER 119.5	GND CON 121.9
-------------------------------	--------------------------------------	---------------------------------	-------------------------



CATEGORY	Distance to Obstacle			
	A	B	C	D
LP MDA	880-1 874 (900-1)	880-1½ 874 (900-1¼)	880-2½	874 (900-2½)
LNAV MDA	960-1¼ 954 (1000-1¼)	960-1½ 954 (1000-1½)	960-3	954 (1000-3)
CIRCLING	960-1¼ 952 (1000-1¼)	960-1½ 952 (1000-1½)	960-3 952 (1000-3)	1040-3 1032 (1100-3)

TDZL/RCLS Rws 6 and 19
REIL Rws 1, 6, 19 and 24
HIRL Rws 1-19 and 6-24

NE-2, 11 JUN 2026 to 09 JUL 2026

NE-2, 11 JUN 2026 to 09 JUL 2026