

WAAS CH 65707 W06A	APP CRS 060°	Rwy Ldg TDZE Apt Elev	6014 5 8
--	------------------------	-----------------------------	-------------------------------------

RNAV (GPS) Y RWY 6

TETERBORO (TEB)

RNP APCH - GPS.

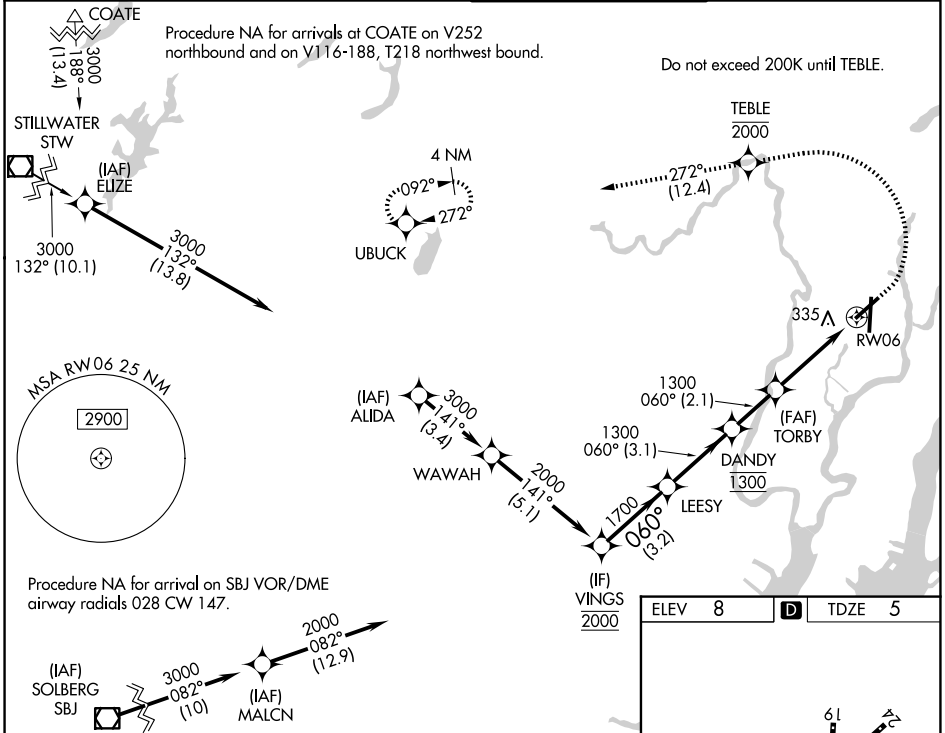
▼ Rwy 6 helicopter visibility reduction below RVR 4000 NA. Circling NA for Cats B, C, and D northwest of Rwy 6 and west of Rwy 19. Inop table does not apply to LPV all Cats. When Circling to Rwy 24 at night, operational VGS1 required, remain on or above VGS1 glidepath until threshold. For inop ALS, increase LNAV Cat A visibility to RVR 5500, Cats C and D visibility to 2½ SM.

MALSRL



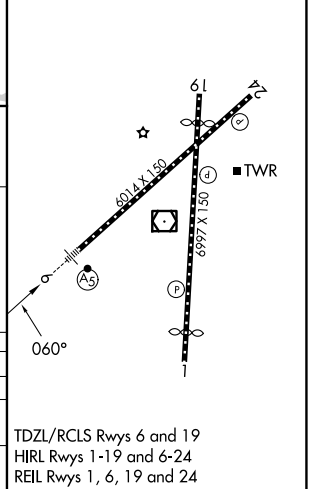
MISSED APPROACH: Climb to 1000, then climbing left turn to 2000 direct TEBLE, cross TEBLE at or below 2000, then climb to 3000 on track 272° to UBUCK and hold.

D-ATIS 114.2 132.85	NEWARK APP CON 127.6 379.9	TETERBORO TOWER 119.5	GND CON 121.9
-------------------------------	--------------------------------------	---------------------------------	-------------------------



ELEV 8	D TDZE 5
--------	-----------------

	VINGS	LEESY	DANDY	TORBY	TEBLE	UBUCK
	2000	1700	1300	1300	3000	2000
GP 3.00° TCH 53	060°		060°		272°	
	3.2 NM	3.1 NM	2.1 NM	1.6 NM	2.3 NM	
CATEGORY	A		B		C	D
LPV DA			255/40		250 (300-¾)	
LNAV MDA	800/40		795 (800-¾)		800-1¾	795 (800-1¾)
CIRCLING	800-1 792 (800-1)		800-1¼ 792 (800-1¼)		820-2½ 812 (900-2½)	1040-3 1032 (1100-3)



NE-2, 11 JUN 2026 to 09 JUL 2026

NE-2, 11 JUN 2026 to 09 JUL 2026