

# WENTZ ONE DEPARTURE (RNAV)

TETERBORO (TEB)  
TETERBORO, NEW JERSEY

9200 UN 60 NE-2, 11 JUN 2026 to 09 JUL 2026

NEWARK DEP CON  
119.2 126.7 379.9  
D-ATIS  
114.2 132.85  
CINC DEL  
128.05  
CPDLC  
GND CON  
121.9  
TETERBORO TOWER  
119.5

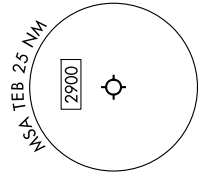
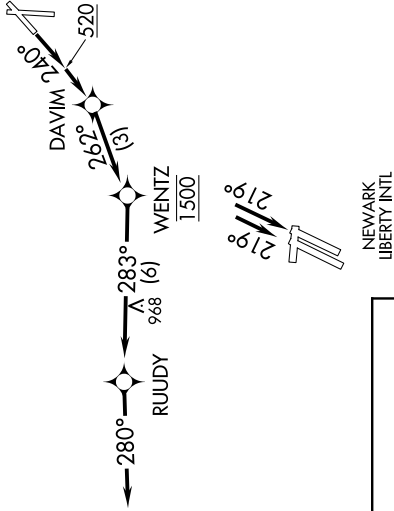
RNAV 1 - DME/DME/IRU or GPS.  
RADAR required.

**TOP ALTITUDE:**  
1500

NOTE: CAUTION between TEB airport and WENTZ, EWR traffic overhead at 2500' MSL.  
NOTE: If unable to accept climb rate, advise ATC on initial contact.

### TAKEOFF MINIMUMS:

Rwy 24: Standard with minimum  
climb of 500'/NM to 520.



NOTE: Chart not to scale.

### DEPARTURE ROUTE DESCRIPTION

**TAKEOFF RUNWAY 24:** Climb on heading 240° to 520, then direct DAVIM, then on track 262° to cross WENTZ at 1500, then on track 283° to RUUDY, then on track 280°, thence....

...expect RADAR vectors. Maintain 1500, expect clearance to filed altitude ten minutes after departure.

### LOST COMMUNICATIONS:

After crossing WENTZ at 1500, then climb to cross RUUDY at 2000. Then proceed to first filed FIX and climb to filed altitude.

# WENTZ ONE DEPARTURE (RNAV)

TETERBORO, NEW JERSEY  
TETERBORO (TEB)

NE-2, 11 JUN 2026 to 09 JUL 2026