

(LEEAH6.LEEAH) 25219

# LEEAH SIX DEPARTURE

AL-891 (FAA)

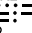
MILLVILLE MUNI (MIV)  
MILLVILLE, NEW JERSEY


ATLANTIC CITY DEP CON  
124.6 327.125  
ASOS 119.6  
CTAF 123.0


**TOP ALTITUDE:  
1800**

RADAR required.

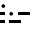
WOODSTOWN  
112.8 OOD   
Chan 75

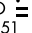
CEDAR LAKE  
115.2 VCN   
Chan 99

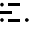
ROBBINSVILLE  
113.8 RBV   
Chan 85

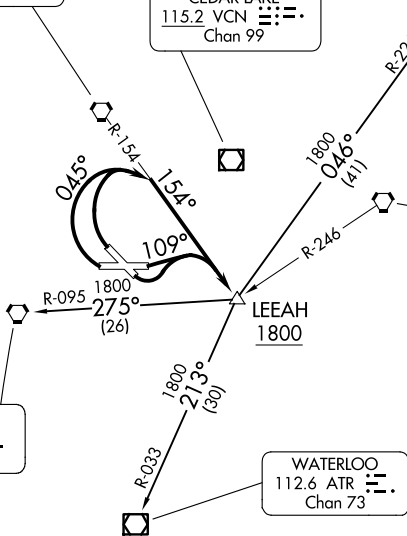
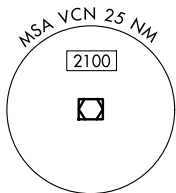
COYLE  
113.4 CYN   
Chan 81

ATLANTIC CITY  
117.15 ACY   
Chan 118(Y)

DUPONT  
114.0 DGO   
Chan 87

SMYRNA  
111.4 ENO   
Chan 51

WATERLOO  
112.6 ATR   
Chan 73



TAKE-OFF MINIMUMS:  
Rwys 10, 14, 28, 32: Standard.

NOTE: Chart not to scale.

## DEPARTURE ROUTE DESCRIPTION

TAKEOFF RUNWAYS 28, 32: Turn right heading 045° and OOD R-154 to LEEAH INT, thence....

TAKEOFF RUNWAYS 10, 14: Turn left heading 109° and OOD R-154 to LEEAH INT, thence....

....Then on transition. Maintain 1800, expect filed altitude 10 minutes after departure.

COYLE TRANSITION (LEEAH6.CYN): From over LEEAH INT via CYN R-226 to CYN VORTAC.

SMYRNA TRANSITION (LEEAH6.ENO): From over LEEAH INT via ENO R-095 to ENO VORTAC.

WATERLOO TRANSITION (LEEAH6.ATR): From over LEEAH INT via ATR R-033 to ATR VOR/DME.

# LEEAH SIX DEPARTURE

(LEEAH6.LEEAH) 07AUG25

MILLVILLE, NEW JERSEY  
MILLVILLE MUNI (MIV)

NE-2, 11 JUN 2026 to 09 JUL 2026

NE-2, 11 JUN 2026 to 09 JUL 2026