

WAAS CH 53723 W10A	APP CRS 101°	Rwy Idg TDZE Apt Elev	6003 74 85
--	------------------------	-----------------------------	---------------------------------------

RNAV (GPS) RWY 10

MILLVILLE MUNI (MIV)

RNP APCH-GPS.

▼ For uncompensated Baro-VNAV systems, LNAV/VNAV NA below -15°C or above 54°C. When local altimeter setting not received, use Atlantic City altimeter setting; increase LPV DA to 330 feet; LNAV/VNAV DA to 571 feet and visibility ¼ SM; increase all MDAs 60 feet and visibility Cat C and D ½ SM. Baro-VNAV and VDP NA when using Atlantic City altimeter setting. For inop MALSRS when using Atlantic City altimeter setting, increase LNAV/VNAV all Cat visibility to 1⅝.

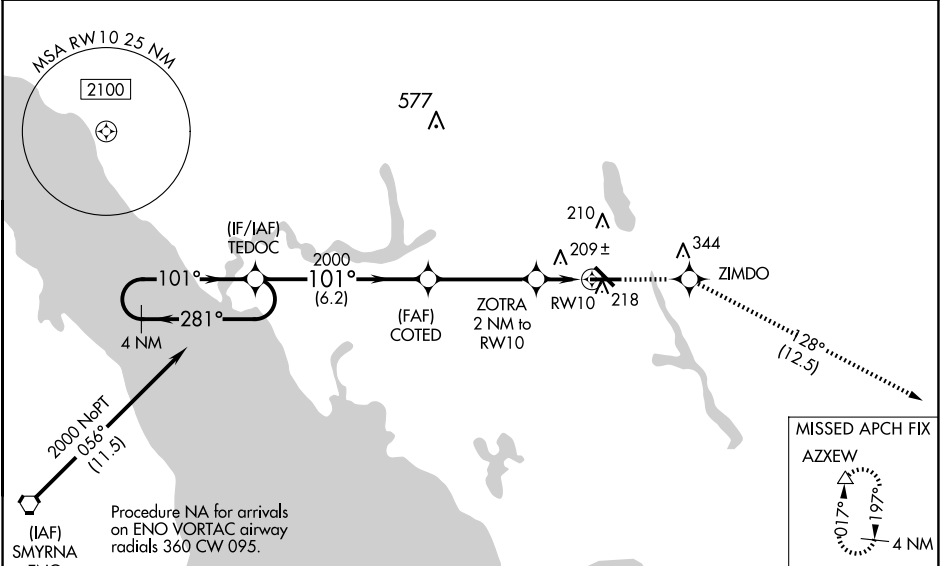


MISSED APPROACH: Climb to 2000 direct ZIMDO and on track 128° to AZXEW and hold.

ASOS
119.6

ATLANTIC CITY APP CON
124.6 327-125

UNICOM
123.0 (CTAF) 0



NE-2, 11 JUN 2026 to 09 JUL 2026

NE-2, 11 JUN 2026 to 09 JUL 2026

ELEV 85	TDZE 74
---------	---------

4 NM Holding Pattern	TEDOC	COTED	ZOTRA 2 NM to RWY 10	tr 128°	AZXEW
----------------------	-------	-------	----------------------	---------	-------

GP 3.00° TCH 52	2000	101°	101°	2000	760	RWY 10
	6.2 NM		3.9 NM		0.9 NM	1.1 NM

CATEGORY	A	B	C	D
LPV DA		274-½	200 (200-½)	
LNAV/VNAV DA		515-1	441 (500-1)	
LNAV MDA	460-½	386 (400-½)	460-⅝	386 (400-⅝)
CIRCLING	520-1 435 (500-1)	580-1 495 (500-1)	660-1½ 575 (600-1½)	660-2 575 (600-2)

MIRL Rwy 10-28 and 14-32 0