

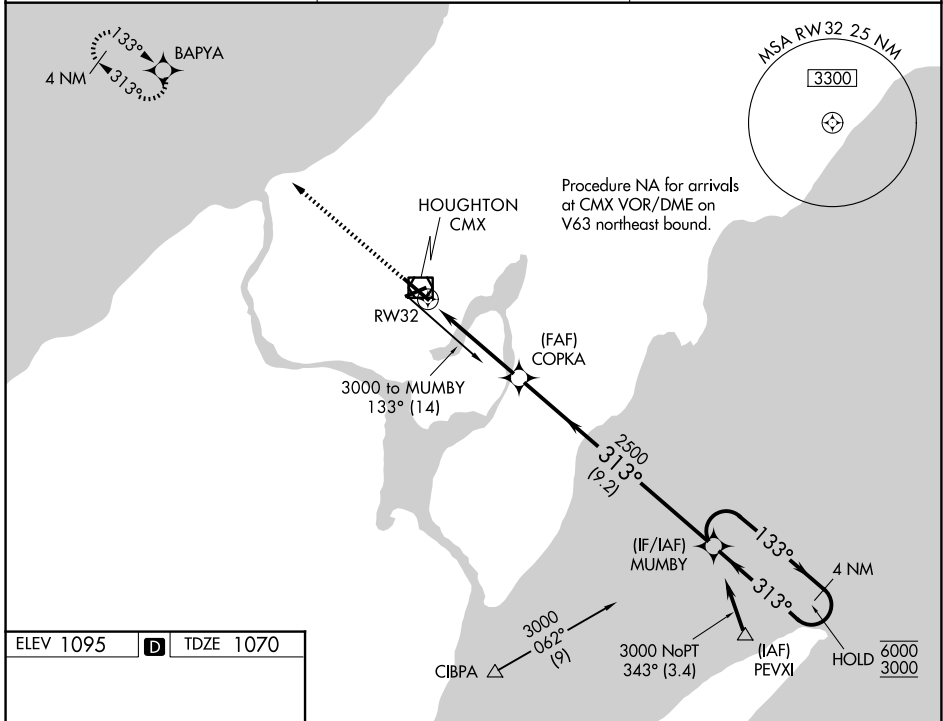
WAAS CH 45809 W32A	APP CRS 313°	Rwy Ldg TDZE 1070 Apt Elev 1095
--	------------------------	---

RNAV (GPS) RWY 32

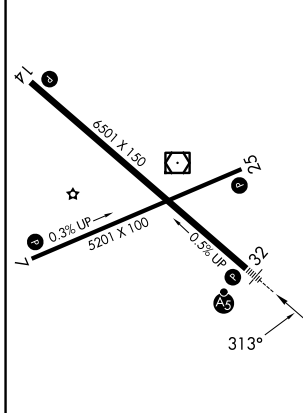
HOUGHTON COUNTY MEML (CMX)

RNP APCH - GPS.	MALSR	MISSED APPROACH: Climb to 3700 direct BAPYA and hold.
<p>▼ For uncompensated Baro-VNAV systems, LNAV/VNAV NA below -17°C or above 54°C. For inop ALS, increase LNAV/VNAV all Cats visibility to 7/8 SM, increase LNAV Cats C/D visibility to 1 SM.</p>		

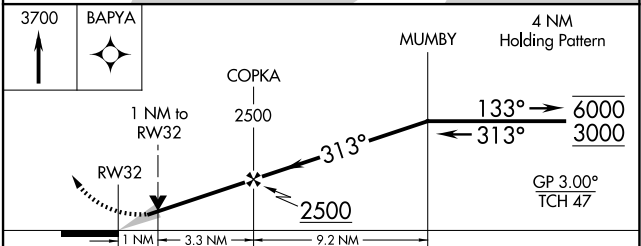
ASOS 125.675	MINNEAPOLIS CENTER 133.55 379.1	UNICOM 122.7 (CTAF)
------------------------	---	-------------------------------



ELEV 1095	D	TDZE 1070
-----------	---	-----------



HIRL Rwy 14-32
MIRL Rwy 7-25
REIL Rwy 7, 14 and 25



CATEGORY	A	B	C	D
LPV DA		1320-1/2	250 (300-1/2)	
LNAV/VNAV DA		1367-1/2	297 (300-1/2)	
LNAV MDA	1420-1/2	350 (400-1/2)	1420-5/8	350 (400-5/8)
CIRCLING	1620-1 525 (600-1)	1660-1 565 (600-1)	1700-1 3/4 605 (700-1 3/4)	1820-2 1/4 725 (800-2 1/4)

EC-1, 11 JUN 2026 to 09 JUL 2026

EC-1, 11 JUN 2026 to 09 JUL 2026