

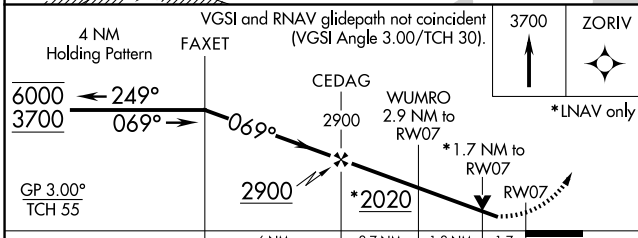
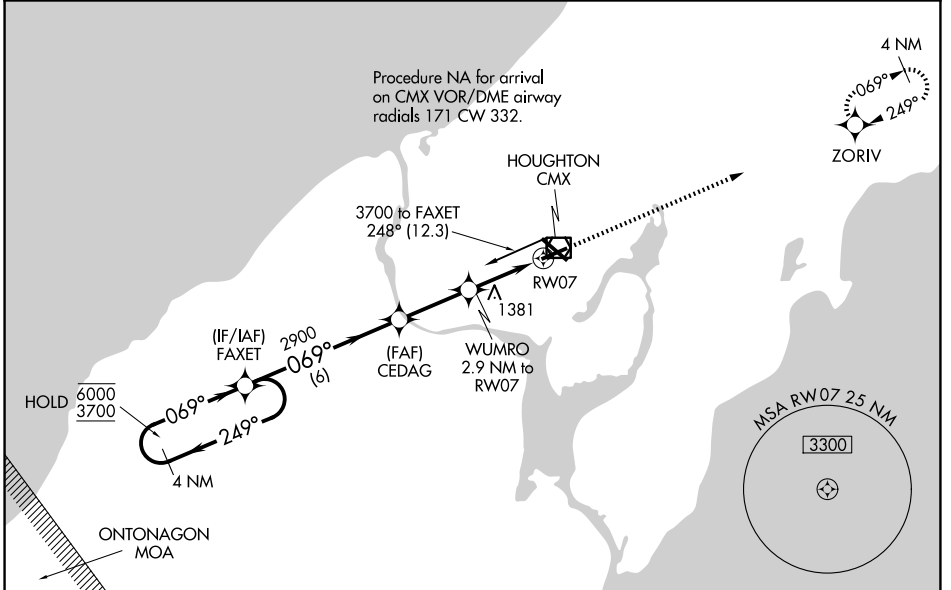
WAAS CH <b>58233</b> <b>W07A</b>	APP CRS <b>069°</b>	Rwy Ldg TDZE Apt Elev	<b>5201</b> <b>1067</b> <b>1095</b>
--	------------------------	-----------------------------	---

# RNAV (GPS) RWY 7

HOUGHTON COUNTY MEML (CMX)

RNP APCH.		<p>MISSED APPROACH: Climb to 3700 direct ZORIV and hold.</p>
<p><b>▽</b> <b>▲</b></p> <p>Rwy 7 helicopter visibility reduction below ¼ SM NA. For uncompensated Baro-VNAV systems, LNAV/VNAV NA below -17°C or above 54°C.</p>		

ASOS <b>125,675</b>	MINNEAPOLIS CENTER <b>133.55 379.1</b>	UNICOM <b>122.7 (CTAF) 0</b>
------------------------	---	---------------------------------



EC-1, 11 JUN 2026 to 09 JUL 2026

EC-1, 11 JUN 2026 to 09 JUL 2026