

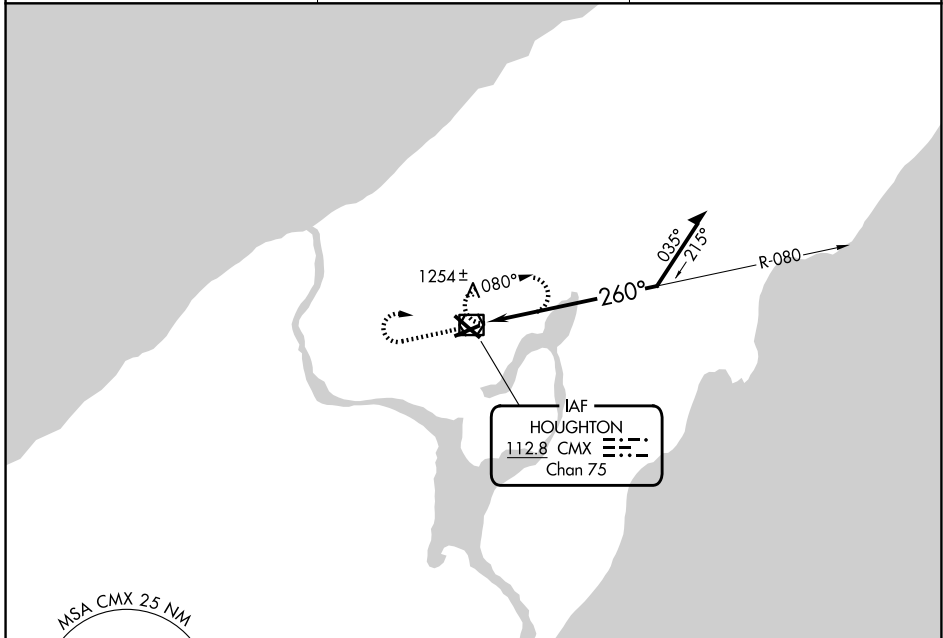
VOR/DME CMX <b>112.8</b> Chan 75	APP CRS <b>260°</b>	Rwy Ldg TDZE Apt Elev	<b>5201</b> <b>1075</b> <b>1095</b>
--	------------------------	-----------------------------	---

# VOR RWY 25

HOUGHTON COUNTY MEML (CMX)

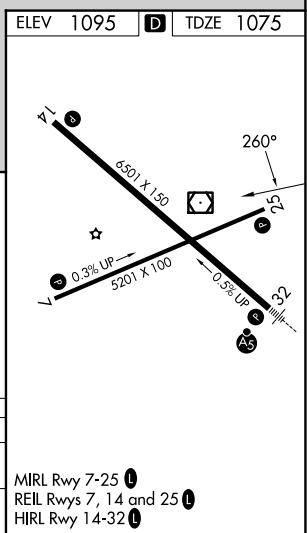
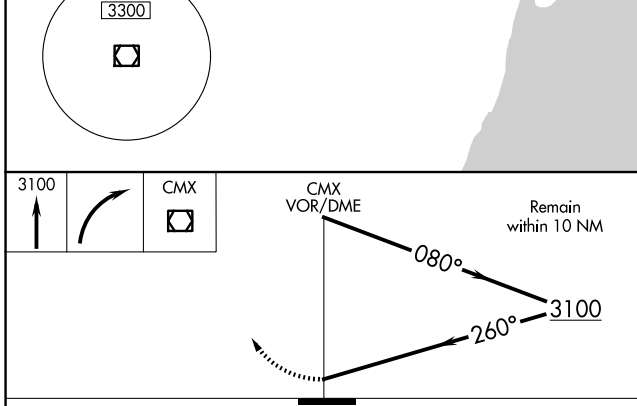
**▼** Rwy 25 helicopter visibility reduction below ¼ SM NA. **⚠** MISSED APPROACH: Climb to 3100 then right turn direct CMX VOR/DME and hold.

ASOS <b>125.675</b>	MINNEAPOLIS CENTER <b>133.55 379.1</b>	UNICOM <b>122.7 (CTAF) 0</b>
------------------------	---	---------------------------------



EC-1, 11 JUN 2026 to 09 JUL 2026

EC-1, 11 JUN 2026 to 09 JUL 2026



CATEGORY	A	B	C	D
S-25	1620-1	545 (600-1)	1620-1⅞ 545 (600-1⅞)	1620 1¼ 545 (600-1¼)
CIRCLING	1620-1 525 (600-1)	1660-1 565 (600-1)	1700-1¾ 605 (700-1¾)	1820-2¼ 725 (800-2¼)