

VOR/DME GAD 112.3 Chan 70	APP CRS 052°	Rwy Ldg 6802 TDZE 569 Apt Elev 569
---	------------------------	---

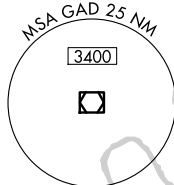
VOR RWY 6
NORTHEAST ALABAMA RGNL (GAD)

⚠ When local altimeter setting not received, use Anniston altimeter setting and increase all MDAs 80 feet; increase S-6 Cat C/D visibility ¼ mile and Circling Cat C ½ SM. VDP NA when using Anniston altimeter setting. DME required.

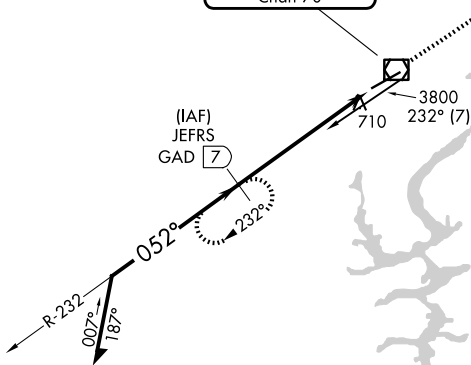
MISSED APPROACH: Climb to 2000 then climbing right turn to 3500 on GAD VOR/DME R-232 to JEFRS/7 DME and hold.

AWOS-3PT 127.825	BIRMINGHAM APP CON 125.45 279.65	CLNC DEL 120.05 257.7	UNICOM 122.725 (CTAF) 0
----------------------------	--	---------------------------------	-----------------------------------

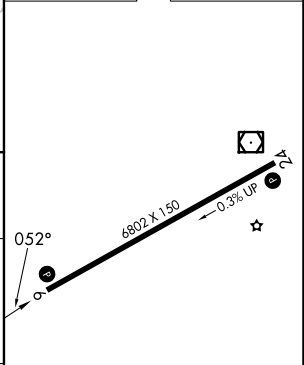
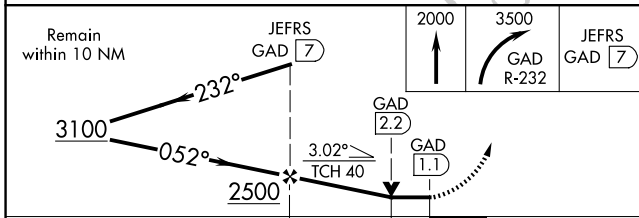
DME REQUIRED



GADSDEN
112.3 GAD
Chan 70



ELEV 569	TDZE 569
----------	----------



CATEGORY	A	B	C	D
S-6	960-1 391 (400-1)		960-1 ½ 391 (400-1 ½)	
CIRCLING	1100-1 531 (600-1)		1440-2 ½ 871 (900-2 ½)	1680-3 1111 (1200-3)

HIRL Rwy 6-24 REIL Rwys 6 and 24					
FAF to MAP 5.9 NM					
Knots	60	90	120	150	180
Min:Sec	5:54	3:56	2:57	2:22	1:58

SE-4, 11 JUN 2026 to 09 JUL 2026

SE-4, 11 JUN 2026 to 09 JUL 2026