

APP CRS	Rwy Ldg	5601
225°	TDZE	221
	Apt Elev	221

RNAV (GPS) RWY 23

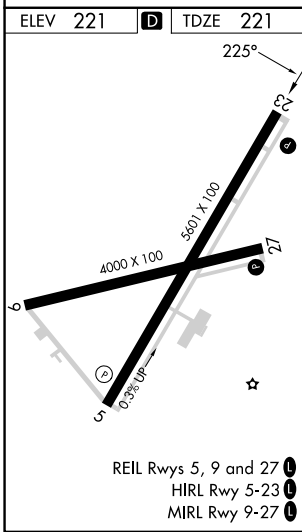
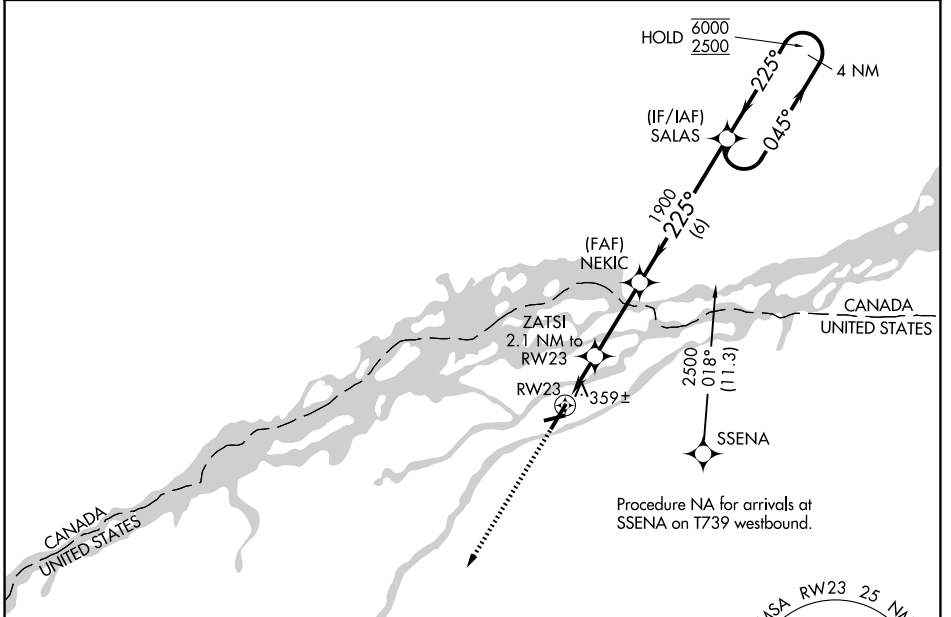
MASSENA INTL-RICHARDS FLD (MSS)

RNP APCH - GPS

⚠ Rwy 23 helicopter visibility reduction below 1 SM NA. Straight-in Rwy 23 NA at night, Circling Rwy 9, 23, 27 NA at night. When local altimeter setting not received, use PTD altimeter setting and increase all MDAs 80 feet and LNAV visibility Cats C and D 1/8 SM, and increase Circling visibility Cats C and D 1/4 SM.

MISSED APPROACH: Climb to 2800 direct DORIE and hold.

ASOS 128.075	BOSTON CENTER 135.25 377.1	UNICOM 123.0 (CTAF) 0
------------------------	--------------------------------------	---------------------------------



	2800	Visual Segment - Obstacles.		
RWY 23		ZATSI 2.1 NM to RWY 23	NEKIC 1900	SALAS 4 NM Holding Pattern
		900	1900	
2.1 NM		3.1 NM	6 NM	
CATEGORY	A	B	C	D
LNAV MDA	680-1	458 (500-1)	680-1 3/8	458 (500-1 3/8)
CIRCLING	740-1	519 (600-1)	880-1 3/4 659 (700-1 3/4)	880-2 659 (700-2)

NE-2, 11 JUN 2026 to 09 JUL 2026

NE-2, 11 JUN 2026 to 09 JUL 2026