

APP CRS
075°

Rwy Ldg **4000**
TDZE **205**
Apt Elev **221**

RNAV (GPS) RWY 9

MASSENA INTL-RICHARDS FLD (MSS)

RNP APCH - GPS.

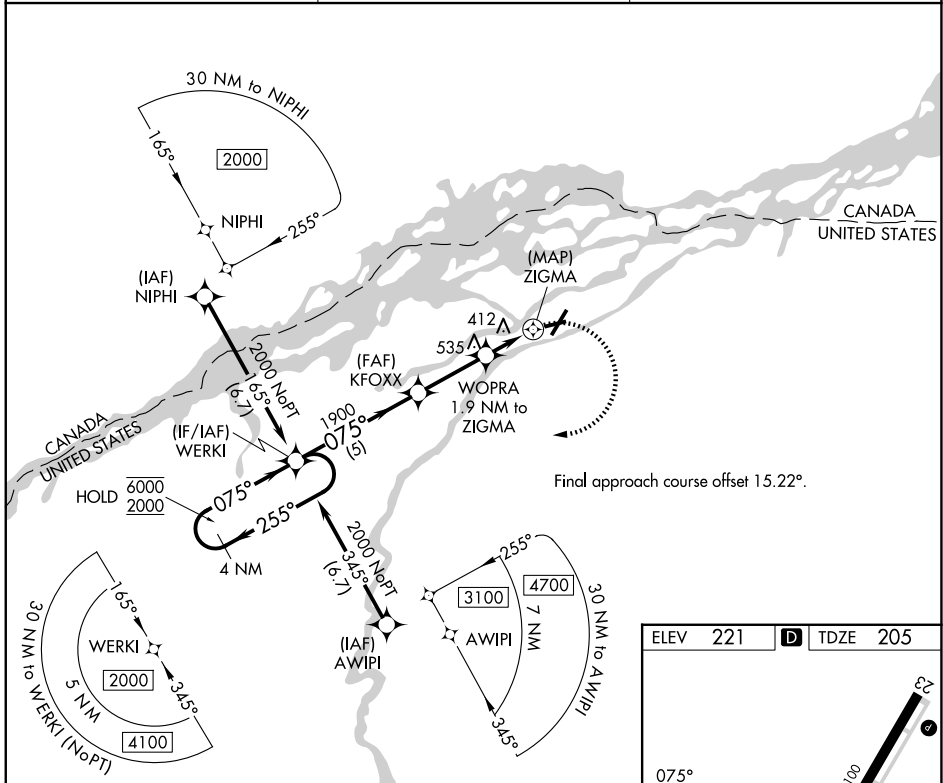
▼ Rwy 9 helicopter visibility reduction below 1 SM NA. Straight-in Rwy 9 NA at night, Circling Rwy 9, 23, 27 NA at night. When local altimeter setting not received, use PTD altimeter setting and increase all MDAs 80 feet and visibility Cats C and D ¼ SM, and increase Circling visibility Cats C and D ¼ SM.

MISSED APPROACH: Climbing right turn to 2000 direct WERKI and hold.

ASOS
128.075

BOSTON CENTER
135.25 377.1

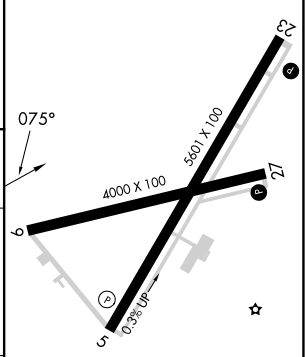
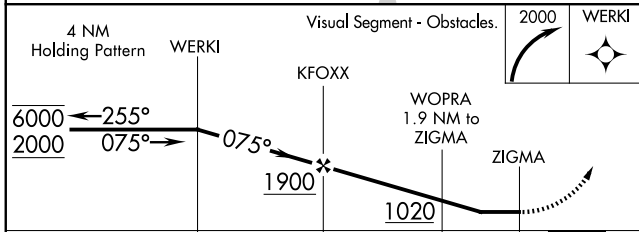
UNICOM
123.0 (CTAF) 0



NE-2, 11 JUN 2026 to 09 JUL 2026

NE-2, 11 JUN 2026 to 09 JUL 2026

ELEV 221 **D** TDZE 205



CATEGORY	A	B	C	D
LNVA MDA	680-1	475 (500-1)	680-1 $\frac{3}{8}$	475 (500-1 $\frac{3}{8}$)
CIRCLING	740-1	519 (600-1)	880-1 $\frac{3}{4}$ 659 (700-1 $\frac{3}{4}$)	880-2 659 (700-2)

REIL Rwy 5, 9 and 27 **0**
HIRL Rwy 5-23 **0**
MIRL Rwy 9-27 **0**