

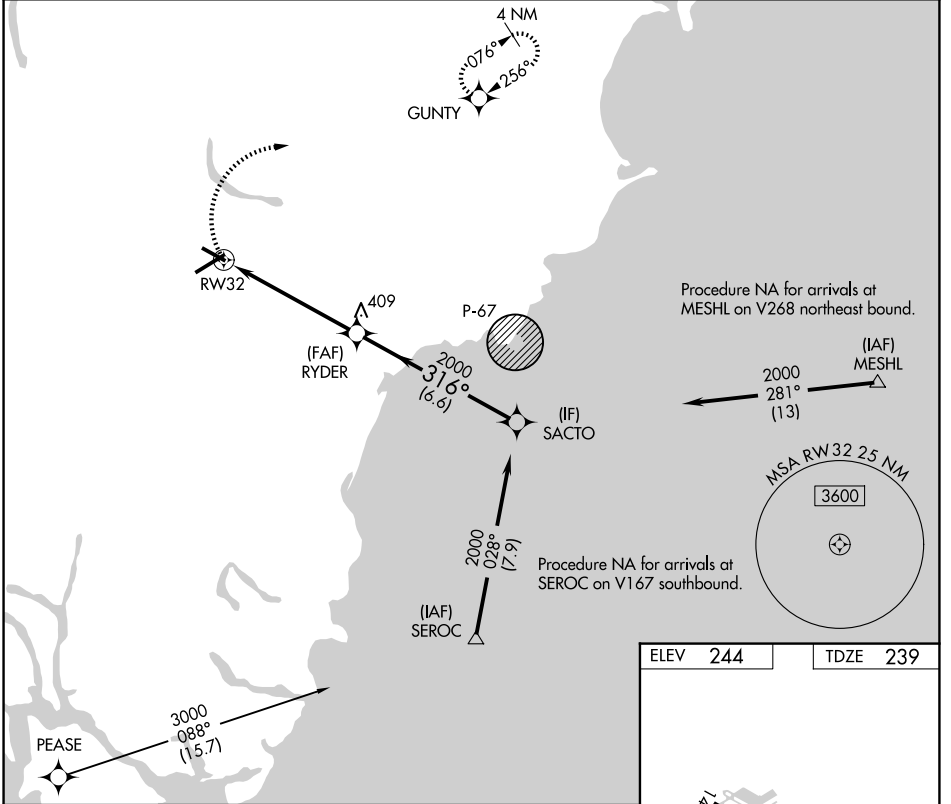
APP CRS 316°	Rwy Ldg TDZE Apt Elev	4999 239 244
------------------------	-----------------------------	---

RNAV (GPS) RWY 32

SANFORD SEACOAST RGNL (SFM)

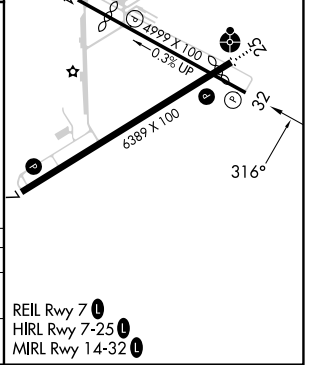
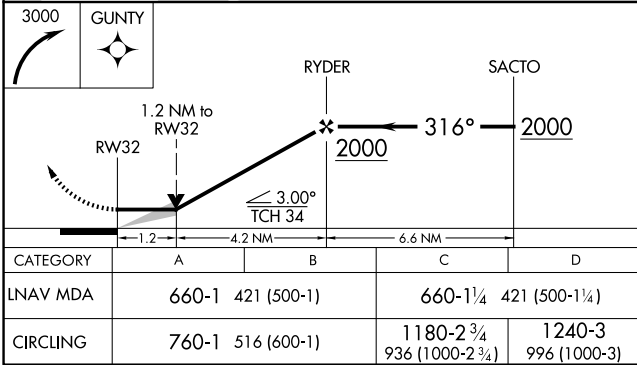
RNP APCH.		MISSED APPROACH: Climbing right turn to 3000 direct GUNTY and hold, continue climb-in-hold to 3000.	
-----------	--	---	--

AWOS-3PT 120.025	PORTLAND APP CON* 119.75 269.35	CLINC DEL 121.725	UNICOM 123.075 (CTAF) 0
----------------------------	---	-----------------------------	-----------------------------------



NE-1, 11 JUN 2026 to 09 JUL 2026

NE-1, 11 JUN 2026 to 09 JUL 2026



- REIL Rwy 7 0
- HIRL Rwy 7-25 0
- MIRL Rwy 14-32 0