

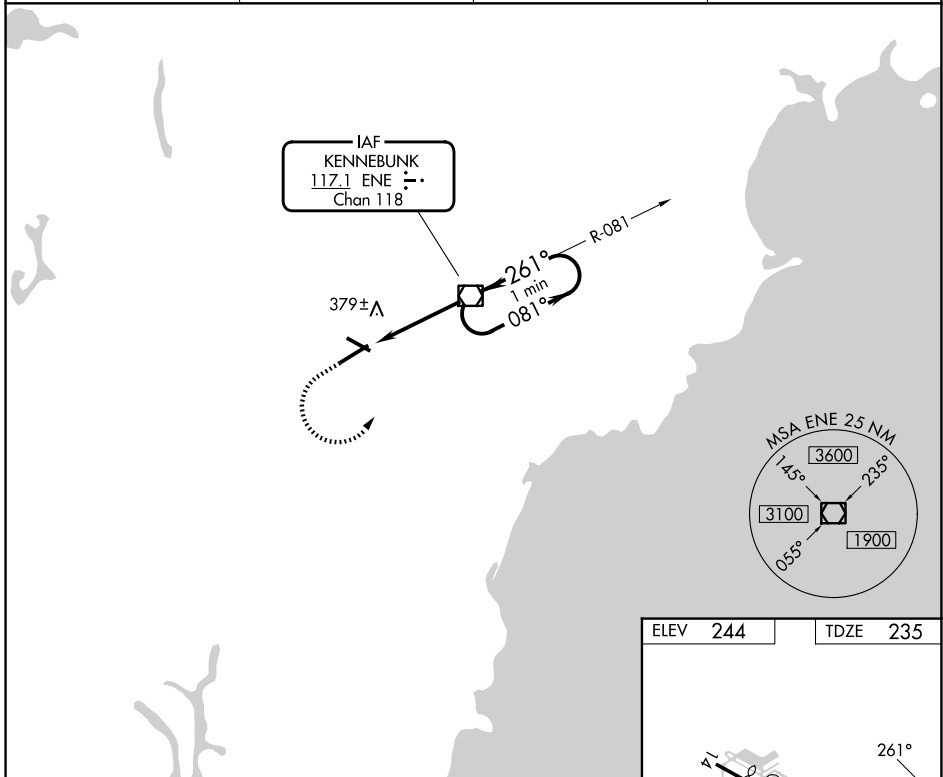
VORTAC ENE 117.1 Chan 118	APP CRS 261°	Rwy Ldg TDZE Apt Elev	6001 235 244
---	------------------------	-----------------------------	---

VOR RWY 25
SANFORD SEACOAST RGNL (SFM)

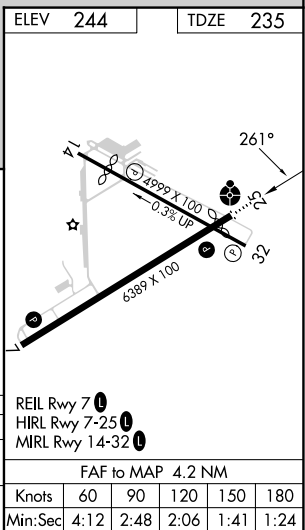
⚠ Inoperative table does not apply to S-25 Cats A/B. For inoperative ODALS, increase S-25 Cats C/D visibility to 1 $\frac{1}{8}$. When local altimeter setting not received, use Rochester, NH altimeter setting increase all MDA 40 feet, S-25 Cats C/D visibility $\frac{1}{8}$ SM, and Circling Cat C visibility $\frac{1}{4}$ SM; for inop ODALS, increase S-25 Cats C/D visibility to 1 $\frac{1}{8}$. Rwy 25 helicopter visibility reduction below $\frac{3}{4}$ SM NA.

ODALS MISSED APPROACH: Climb to 800 then climbing left turn to 2000 direct ENE VOR/DME and hold.

AWOS-3PT 120.025	PORTLAND APP CON * 119.75 269.35	CLNC DEL 121.725	UNICOM 123.075 (CTAF) 0
----------------------------	--	----------------------------	--



800	2000	ENE	ENE VOR/DME	One Minute Holding Pattern
↑	↶	☐		
		ENE 3.1	081° → 2000	
		ENE 4.2	← 261°	
		3.17°	1700	
		TCH 47		
		1.1	3.1 NM	
CATEGORY	A	B	C	D
S-25	640-1 405 (400-1)			
CIRCLING	760-1 516 (600-1)	1180-2 $\frac{3}{4}$ 936 (1000-2 $\frac{3}{4}$)	1240-3 996 (1000-3)	



NE-1, 11 JUN 2026 to 09 JUL 2026

NE-1, 11 JUN 2026 to 09 JUL 2026