

# HI-TACAN X RWY 23

TACAN NBC Chan <b>42</b>	APCH CRS <b>221°</b>	Rwy ldg <b>12,202</b> TDZE <b>16</b> Arprt Elev <b>37</b>
-----------------------------	-------------------------	---

[USN]

BEAUFORT MCAS (MERRITT FLD) (KNBC)

ALSIF-1  

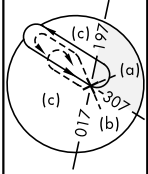
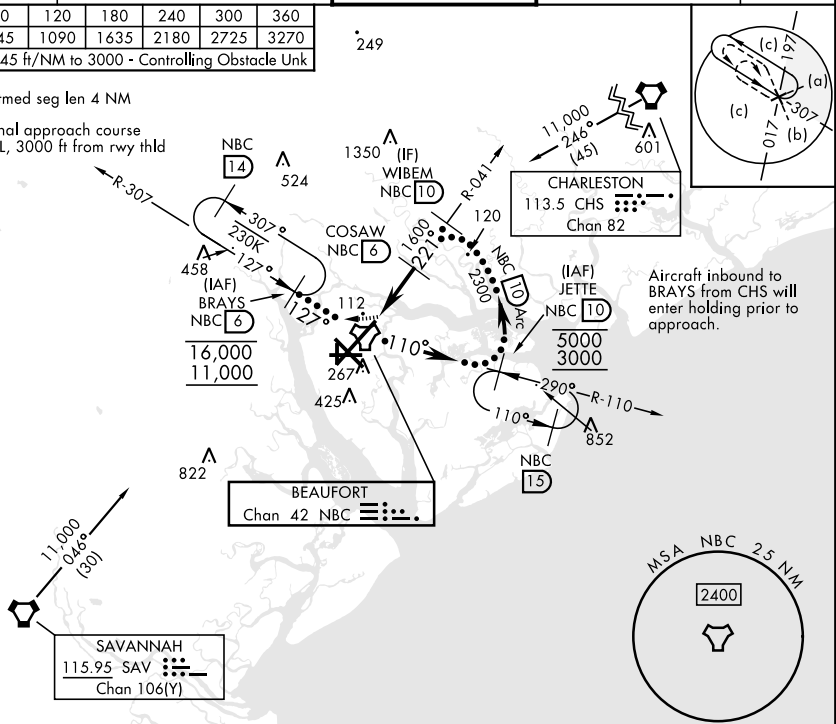
**MISSED APPROACH:** Climb to 500 then climbing right turn to 3000, join NBC TACAN R-307 to direct BRAYS and hold.

<b>ATIS *</b> <b>279.525</b>	<b>APP CON</b> <b>125.125 292.125</b> (ABV 3000) <b>123.7 269.125</b> (3000 and BLW)	<b>TOWER *</b> <b>119.05 342.875</b>	<b>GND CON</b> <b>128.15 348.625</b>	<b>ASR/PAR</b>
---------------------------------	--	---	---	----------------

Knots	60	120	180	240	300	360
V/V(fpm)	545	1090	1635	2180	2725	3270

Min climb of 545 ft/NM to 3000 - Controlling Obstacle Unk

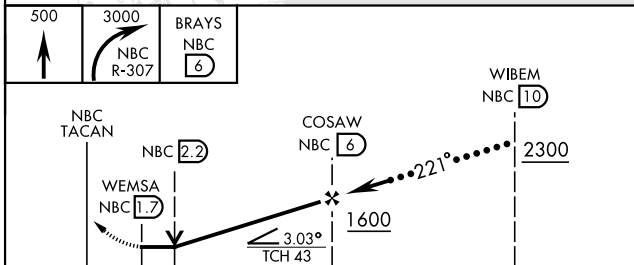
**CAUTION:** Intmed seg len 4 NM  
**CAUTION:** Final approach course 88 ft from RCL, 3000 ft from rwy thld



SE-2, 11 JUN 2026 to 09 JUL 2026

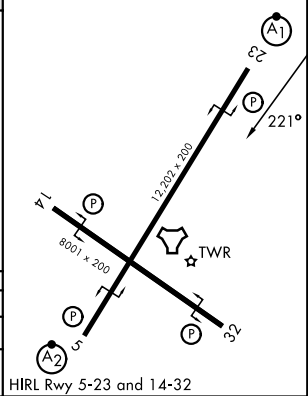
SE-2, 11 JUN 2026 to 09 JUL 2026

**EMERG SAFE ALT 100 NM 3100**



CATEGORY	C	D	E
S-23 *	380-¾	364	(400-¾)
CIRCLING	580-1½ 543 (600-1½)	600-2 563 (600-2)	740-2 ½ 703 (800-2½)

ELEV	37	TDZE	16
------	----	------	----



# HI-TACAN X RWY 23