

# HI-TACAN Z RWY 23

TACAN Chan <b>42</b>	NBC <b>221°</b>	APCH CRS <b>221°</b>	Rwy ldg <b>12,202</b> TDZE <b>16</b> Arpt Elev <b>37</b>
-------------------------	--------------------	-------------------------	--

[USN]

BEAUFORT MCAS (MERRITT FLD) (KNBC)

ALSF-1  

 A1
 

**MISSED APPROACH:** Climb to 500, then climbing right turn to 3000, intercept NBC TACAN R-307 direct BRAYS and hold.

\*When ALS inop, increase vis to 1 mile.

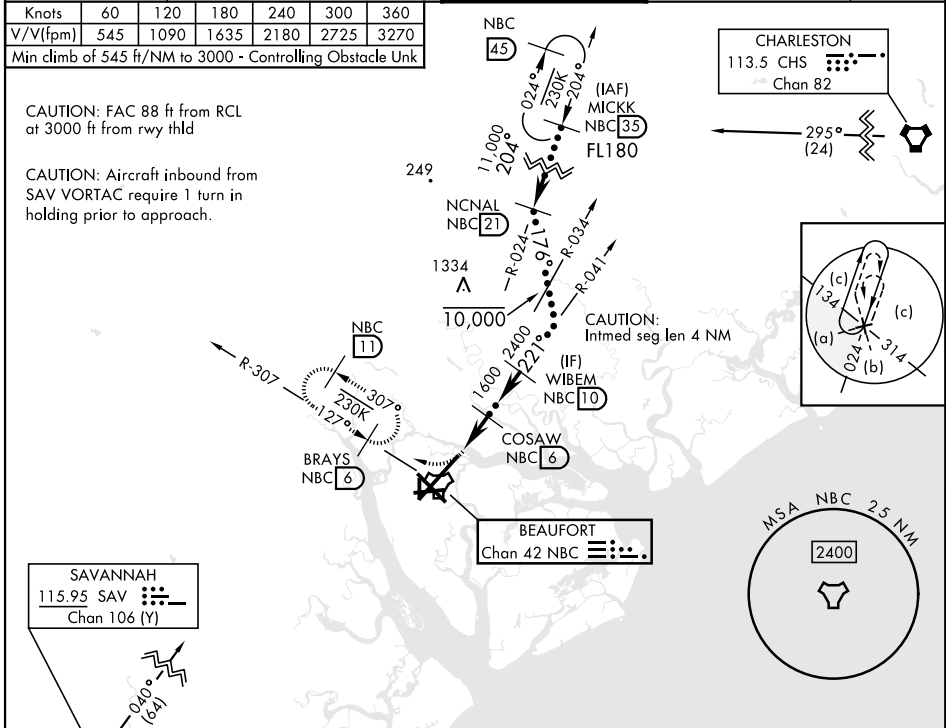
<b>ATIS *</b> <b>279.525</b>	<b>APP CON</b> <b>125.125 292.125</b> (ABV 3000) <b>123.7 269.125</b> (3000 and BLW)	<b>TOWER *</b> <b>119.05 342.875</b>	<b>GND CON</b> <b>128.15 348.625</b>	<b>ASR/PAR</b>
---------------------------------	--	---	---	----------------

Knots	60	120	180	240	300	360
V/V(fpm)	545	1090	1635	2180	2725	3270

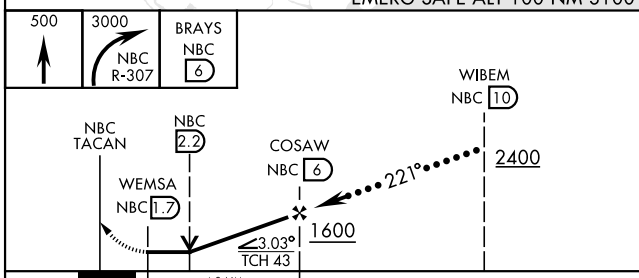
Min climb of 545 ft/NM to 3000 - Controlling Obstacle Unk

CAUTION: FAC 88 ft from RCL at 3000 ft from rwy thld

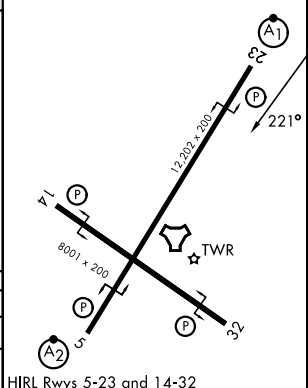
CAUTION: Aircraft inbound from SAV VORTAC require 1 turn in holding prior to approach.



EMERG SAFE ALT 100 NM 3100



ELEV	37	TDZE	16
------	----	------	----



CATEGORY	C	D	E
S-23 *	380- $\frac{3}{4}$	364	(400- $\frac{3}{4}$ )
CIRCLING	580-1 $\frac{1}{2}$ 543 (600-1 $\frac{1}{2}$ )	600-2 563 (600-2)	740-2 $\frac{1}{2}$ 703 (800-2 $\frac{1}{2}$ )

# HI-TACAN Z RWY 23

SE-2, 11 JUN 2026 to 09 JUL 2026

SE-2, 11 JUN 2026 to 09 JUL 2026