

BEAUFORT, SOUTH CAROLINA

# ILS or LOC Z RWY 23

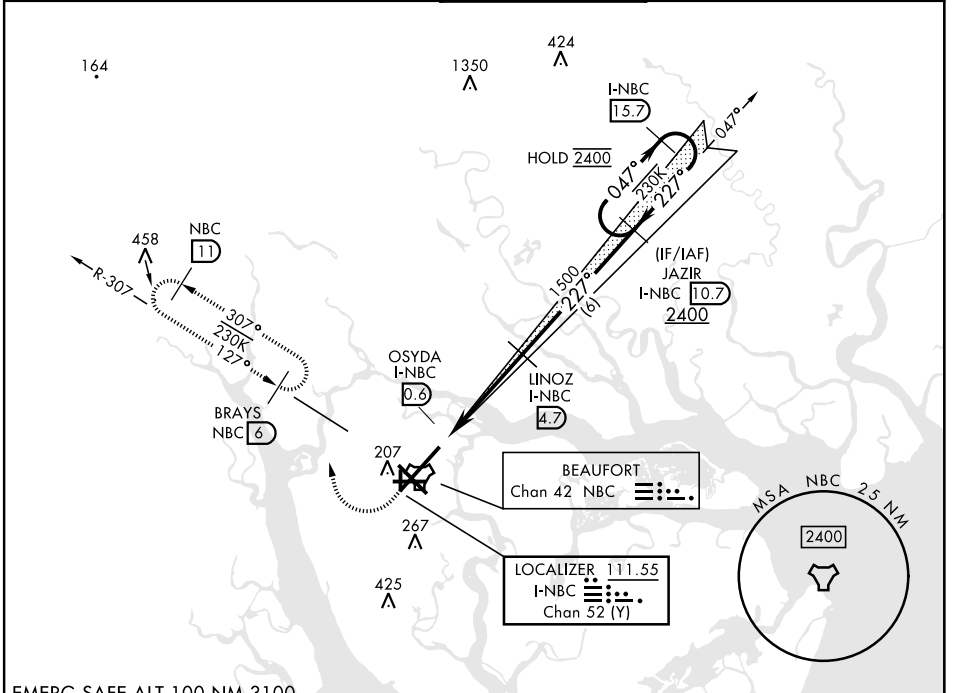
LOC/DME I-NBC <b>111.55</b> Chan <b>52 (Y)</b>	APCH CRS <b>227°</b>	Rwy Idg <b>12,202</b> TDZE <b>16</b> Arprt Elev <b>37</b>
--	-------------------------	---

[USN]

BEAUFORT MCAS (MERRITT FLD) (KNBC)

RNAV or RADAR required for missed approach.	ALSF-1 	MISSED APPROACH: Climb to 500, then climbing right turn to 3000, join NBC TACAN R-307 direct BRAYS and hold. Continue climb in hold to 3000.
<p>▼ *When ALS inop, increase vis to 3/4 mile.</p> <p>**When ALS inop, increase CAT AB vis to 1 mile; CAT CDE vis to 1 1/2 miles.</p>		

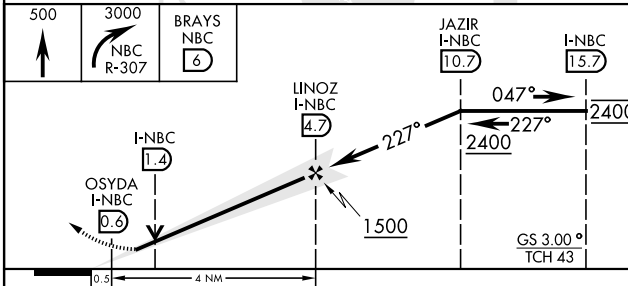
ATIS ★ <b>279.525</b>	APP CON <b>125.125 292.125</b> (ABV 3000) <b>123.7 269.125</b> (3000 and BLV)	TOWER ★ <b>119.05 342.875</b>	GND CON <b>128.15 348.625</b>	ASR/PAR
--------------------------	---	----------------------------------	----------------------------------	---------



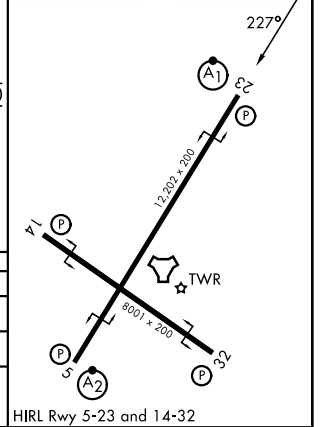
SE-2, 11 JUN 2026 to 09 JUL 2026

SE-2, 11 JUN 2026 to 09 JUL 2026

EMERG SAFE ALT 100 NM 3100



ELEV	37	TDZE	16
------	----	------	----



CATEGORY	A	B	C	D	E
S-ILS 23*	216-1/2		200	(200-1/2)	
S-LOC 23**	460-1/2	444 (500-1/2)	460-7/8	444	(500-7/8)
CIRCLING	560-1	523 (600-1)	580-1 1/2 543 (600-1 1/2)	600-2 563 (600-2)	740-2 1/2 703 (800-2 1/2)

BEAUFORT, SOUTH CAROLINA

32°29'N-80°43'W

BEAUFORT MCAS (MERRITT FLD) (KNBC)

Orig 25JAN24

# ILS or LOC Z RWY 23