

BEAUFORT, SOUTH CAROLINA


RNAV (GPS) RWY 5

WAAS Chan 90095 W05A	APCH CRS 047°	Rwy Idg 12,202 TDZE 37 Arpt Elev 37
--	-------------------------	--

[USN]

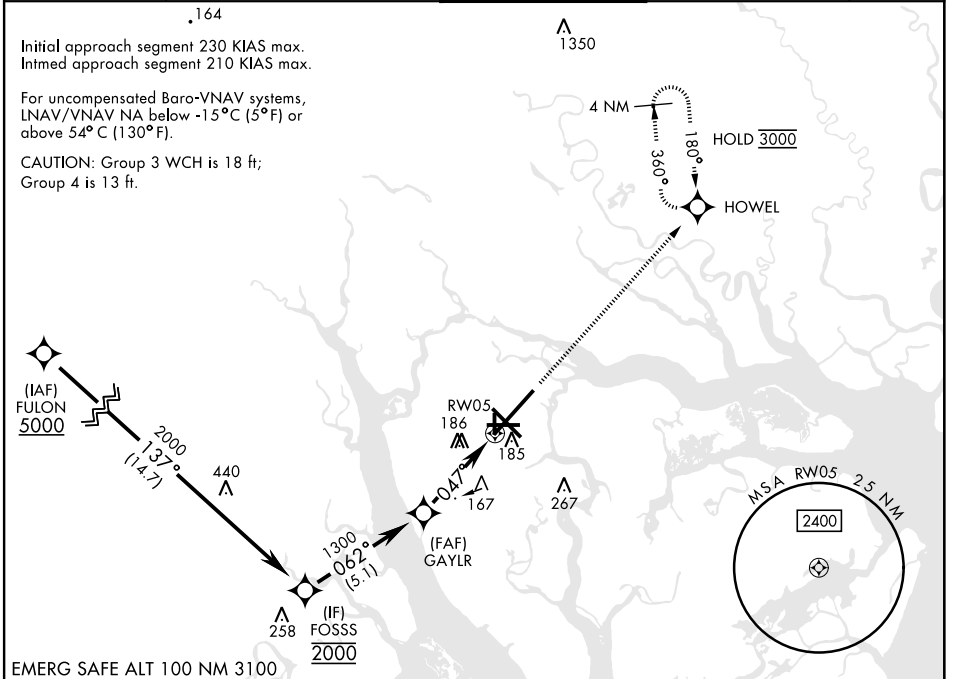
BEAUFORT MCAS (MERRITT FLD) (KNBC)

RNP APCH
RADAR required
<p>▼ * When ALS inop, increase vis to 1 mile. ** When ALS inop, increase CAT AB vis to 1 mile, CAT CD to 1½ miles.</p>

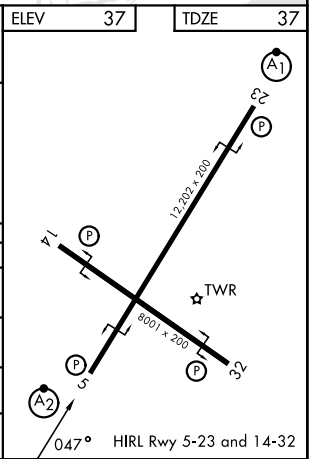
SALSF 

MISSED APPROACH: Climb to 3000 direct HOWEL and hold, continue climb-in-hold to 3000.

ATIS ★ 279.525	APP CON 125.125 292.125 (ABV 3000) 123.7 269.125 (3000 and BLV)	TOWER ★ 119.05 342.875	GND CON 128.15 348.625	ASR/PAR
--------------------------	---	----------------------------------	----------------------------------	---------



FULON		FOSSS		GAYLR		RW05	
5000		2000		1300		3000	
137°		062°		047°		HOWEL	
1.37 NM		1.1 NM to RW05		3.9 NM		ELEV 37	
GP 3.00° TCH 38						TDZE 37	
CATEGORY	A	B	C	D			
LPV DA	237-¾		200	(200-¾)			
LNAV/ * VNAV DA	409-¾		372	(400-¾)			
LNAV MDA	420-¾	383 (400-¾)	420-7/8		383 (400-7/8)		
CIRCLING	560-1	523 (600-1)	580-1½		543 (600-1½)	600-2	
					563 (600-2)		



BEAUFORT, SOUTH CAROLINA

32°29'N-80°43'W

BEAUFORT MCAS (MERRITT FLD) (KNBC)

Amdt 6 11JUL24

RNAV (GPS) RWY 5

SE-2, 11 JUN 2026 to 09 JUL 2026

SE-2, 11 JUN 2026 to 09 JUL 2026