


WAAS CH 48810 W09B	APP CRS 095°	Rwy Ldg TDZE Apt Elev	5000 39 55
--	------------------------	-----------------------------	---------------------------------------

RNAV (GPS) RWY 9R

ORLANDO SANFORD INTL (SF'B)

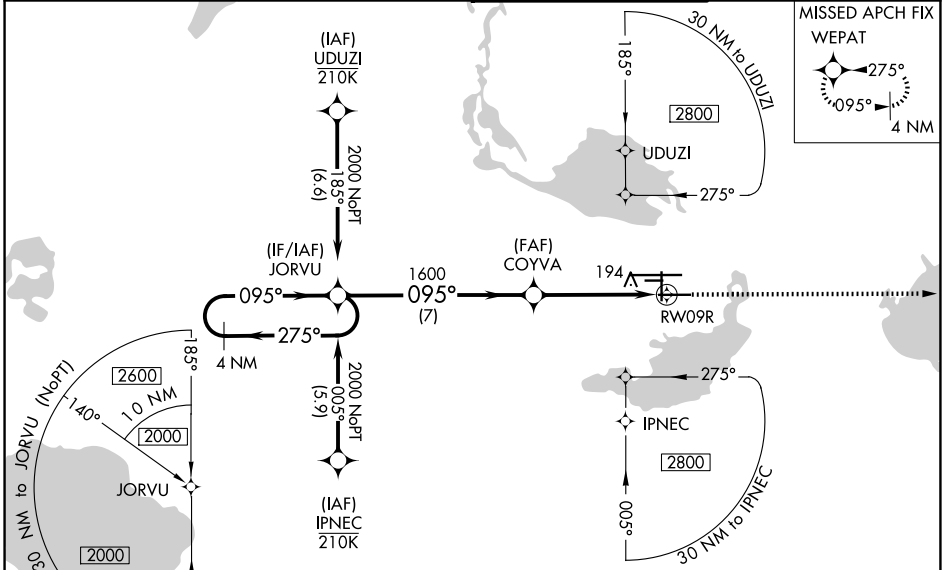
RNP APCH.

▼ For uncompensated Baro-VNAV systems, LNAV/VNAV NA below 0° C or above 54° C. Baro-VNAV and VDP NA when using Orlando Exec altimeter setting. When local altimeter setting not received, use Orlando Exec altimeter setting and increase LPV DA to 282, LNAV/VNAV DA to 501 and all MDA 60 feet; increase LNAV/VNAV all Cats visibilities 1/8 SM and LNAV Cat C/D visibility 1/4 SM. Night landing: Rwy 27C NA.

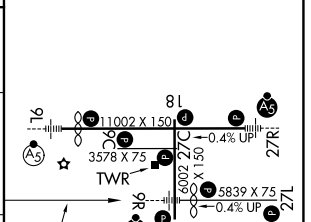
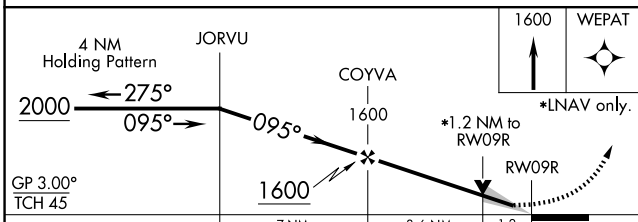
MALSR 

MISSED APPROACH: Climb to 1600 direct WEPAT and hold.

ATIS 125.975	ORLANDO APP CON 135.3 351.9 (N) 125.225 351.9 (S)	SANFORD TOWER★ 120.3 (CTAF) 0 254.35	GND CON 121.35 254.35
------------------------	---	--	---------------------------------



ELEV	55	TDZE	39
------	----	------	----



CATEGORY	A	B	C	D
LPV DA	239-1/2		200 (200-1/2)	
LNAV/VNAV DA	458-1		419 (500-1)	
LNAV MDA	460-1/2	421 (500-1/2)	460-3/4	421 (500-3/4)
CIRCLING	580-1	525 (600-1)	600-1/2 545 (600-1/2)	640-2 585 (600-2)

MIRL Rwy 9C-27C and 18-36
 HIRL Rwy 9L-27R and 9R-27L
 REIL Rwy 9C, 18, 27L and 36

SE-3, 11 JUN 2026 to 09 JUL 2026

SE-3, 11 JUN 2026 to 09 JUL 2026