

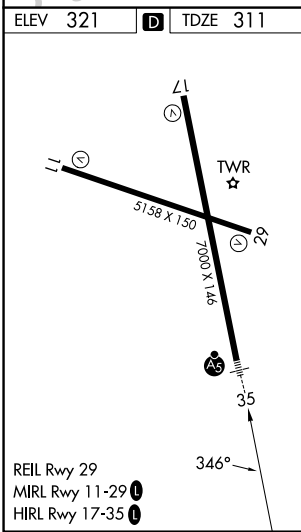
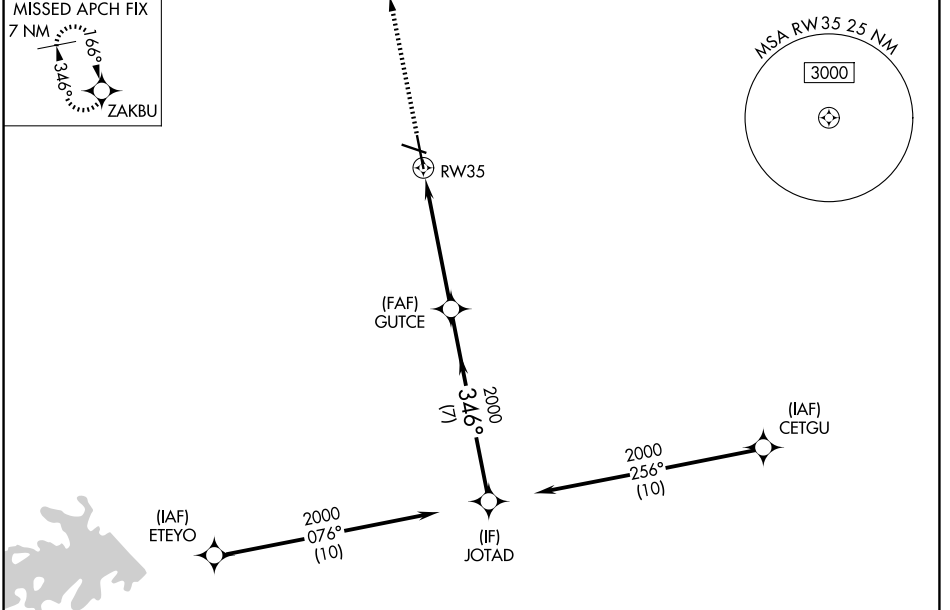
WAAS CH <b>63122</b> <b>W35A</b>	APP CRS <b>346°</b>	Rwy Ldg <b>6932</b> TDZE <b>311</b> Apt Elev <b>321</b>
--	------------------------	---

# RNAV (GPS) RWY 35

EASTERWOOD FLD (CLL)

RNP APCH - GPS.		MALSRL 	MISSED APPROACH: Climb to 2100 direct ZAKBU and hold.
<p><b>▼</b> For uncompensated Baro-VNAV systems, LNAV/VNAV NA below -6°C or above 54°C.  <b>▲</b> For inop ALS, increase LPV Cat E visibility to 3/4 SM, increase LNAV/VNAV all Cats visibility to 2/3 SM, increase LNAV Cat E visibility to 1 1/2 SM.</p>			

ATIS <b>126.85</b>	HOUSTON APP CON <b>134.3 360.85</b>	EASTERWOOD TOWER ★ <b>118.5 (CTAF) 0 284.7</b>	GND CON <b>128.7 284.7</b>	UNICOM <b>122.95</b>
-----------------------	--	---	-------------------------------	-------------------------



ELEV 321	<b>D</b>	TDZE 311			
2100	ZAKBU				
		JOTAD			
		GP 3.00° TCH 55			
CATEGORY	A	B	C	D	E
LPV DA	511-1/2		200 (200-1/2)		
LNAV/VNAV DA	619-1/2		308 (300-1/2)		
LNAV MDA	760-1/2	449 (500-1/2)	760-7/8		449 (500-7/8)
CIRCLING	860-1	880-1	1000-2	1180-2 3/4	1180-3
	539 (600-1)	559 (600-1)	679 (700-2)	859 (900-2 3/4)	859 (900-3)

SC-5, 11 JUN 2026 to 09 JUL 2026

SC-5, 11 JUN 2026 to 09 JUL 2026