

(MMU7.MMU) 28FEB19

MORRISTOWN SEVEN DEPARTURE

MORRISTOWN, NEW JERSEY
MORRISTOWN MUNI (MMT)

CLNC DEL 128.6
GND CON 134.2
MORRISTOWN TOWER ★
118.1 (CTAF) 353.9
NEWARK DEP CON
119.2 379.9

HUGUENOT
116.1 HUG
Chan 108

NEION
COATE
R-311

GAYEL

HAAYS

SPARTA
115.7 SAX
Chan 104

KINGSTON
117.6 IGN
Chan 123

BREZY

TOP ALTITUDE:
2000

CARMEL
116.6 CMK
Chan 113

GREKI

MERIT

BAYYS

BRIDGEPORT
108.8 BDR
Chan 25

NEWEL
R-264
BWZ
R-306

ELIOT
ZIMMZ

PARKE

LANNA

BIGGY

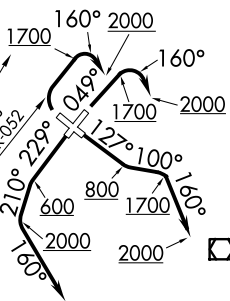
BROADWAY
114.2 BWZ
Chan 89

SOLBERG
112.9 SBJ
Chan 76

COLTS NECK
115.4 COL
Chan 101

LA GUARDIA
113.1 LGA
Chan 78

DEER PARK
117.7 DPK
Chan 124



TAKEOFF MINIMUMS:
Rwy 5: 300-1½ or standard with minimum climb of 210' per NM to 500, or alternatively, with standard takeoff minimums and normal 200' per NM climb gradient, takeoff must occur no later than 1400' prior to DER.
Rwy 13: 300-1½ or standard with minimum climb of 230' per NM to 500.
Rwy 23: 400-2¼ or standard with minimum climb of 475' per NM to 600.
Rwy 31: 300-1 with minimum climb of 310' per NM to 1500.

(CONTINUED ON FOLLOWING PAGE)

NOTE: RADAR Required

NOTE: Chart not to scale

(MMU7.MMU) 24249

AL-931 (FAA)

MORRISTOWN MUNI (MMT)
MORRISTOWN, NEW JERSEY



DEPARTURE ROUTE DESCRIPTION

TAKEOFF RUNWAY 5: Climb heading 049° to 1700, then climbing right turn heading 160° to 2000, thence...

TAKEOFF RUNWAY 13: Climb heading 127° to 800, then climb heading 100° to 1700, then climb heading 160° to 2000, thence...

TAKEOFF RUNWAY 23: Climb heading 229° to 600, then climb heading 210° to 2000, then turning left heading 160°, thence...

TAKEOFF RUNWAY 31: Climbing right turn on SBJ R-052 to 1700, then climbing right turn heading 160° to 2000, thence...

...as per notes or vectors to assigned route/fix. Expect clearance to filed altitude/flight level ten (10) minutes after departure.

LOST COMMUNICATIONS: For aircraft proceeding to COATE, NEION, HAAYS, GAYEL, BREZY, if radio contact lost/not established with ATC, climb to 3000 feet after crossing SBJ R-047.

NOTE: BAYYS departures will be issued vectors to BDR/BDR R-054.

NOTE: BIGGY departures will be issued vectors to SBJ/SBJ R-237.

NOTE: BREZY departures will be issued vectors to IGN R-217 to BREZY.

NOTE: COATE departures will be issued vectors to SAX/SAX R-311.

NOTE: DIXIE departures will be issued vectors to COL R-350/COL/COL R-192 or ELVAE/COL.

NOTE: ELIOT departures will be issued vectors to SAX R-252. ELIOT may be accessed by all types of aircraft requesting a final altitude of 14000 or 16000.

NOTE: GAYEL departures will be issued vectors to DPK R-320.

NOTE: HAAYS departures will be issued vectors to HUO.

NOTE: LANNA departures will be issued vectors to SBJ/SBJ R-274.

NOTE: MERIT departures will be issued vectors to LGA R-055.

NOTE: NEION departures will be issued vectors to LGA R-322.

NOTE: NEWEL departures will be issued vectors to SAX/SAX R-264. NEWEL may be accessed by jet aircraft only requesting a final altitude at or above flight level 180.

NOTE: Rwy 23 PARKE departures will be issued vectors to BWZ R-250 or SBJ/SBJ R-302.

NOTE: WHITE departures will be issued vectors to COL R-350/COL/COL R-204 or ELVAE/COL.

NOTE: ZIMMZ departures will be issued vectors SBJ/SBJ R-317. ZIMMZ may be accessed by all types of aircraft requesting a final altitude at or above flight level 180.

NE-2, 11 JUN 2026 to 09 JUL 2026

NE-2, 11 JUN 2026 to 09 JUL 2026