


APP CRS <b>229°</b>	Rwy Ldg <b>5998</b>
	TDZE <b>184</b>
	Apt Elev <b>187</b>

# RNAV (RNP) Y RWY 23

MORRISTOWN MUNI (MMU)

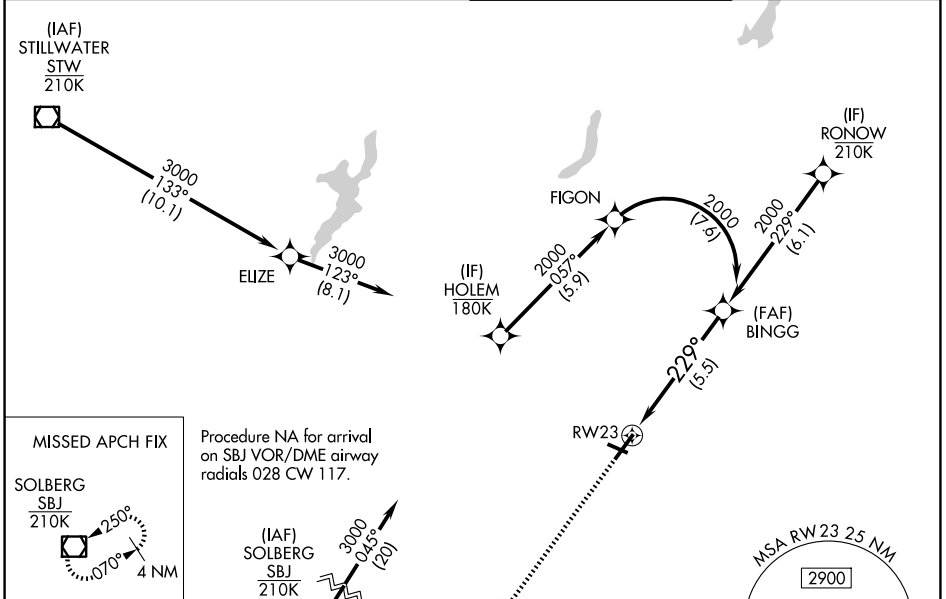
RNP AR APCH - GPS. Authorization required. From HOLEM: RF

When local altimeter setting not received, procedure NA. For uncompensated Baro-VNAV systems, procedure NA Below -15°C or above 54°C. For inop ALS, increase RNP 0.11 all Cats visibility to 1 SM and RNP 0.30 all Cats visibility to 1/2 SM.

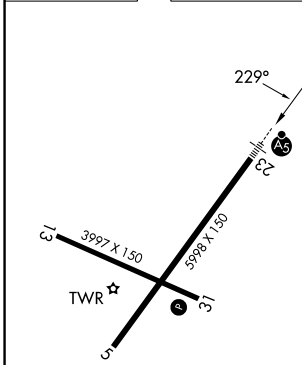
MALSR 

MISSED APPROACH: Climb to 2000 direct SUCSO then on track 250° to SBJ VOR/DME and hold.

ATIS <b>124.25</b>	NEWARK APP CON <b>127.6 379.9</b>	MORRISTOWN TOWER* <b>118.1 (CTAF) 353.9</b>	GND CON <b>134.2</b>
-----------------------	--------------------------------------	--	-------------------------



ELEV 187	TDZE 184
----------	----------



2000	SUCSO	tr 250°	SBJ
↑	✧	↔	◻
See planview for multiple IF locations.			
GP 3.00° TCH 55			

CATEGORY	A	B	C	D
RNP 0.11 DA		553-5/8	369 (400-5/8)	
RNP 0.30 DA		808-13/8	624 (700-13/8)	

**AUTHORIZATION REQUIRED**

REIL Rwy 5 and 31   
 HIRL Rwy 5-23   
 MIRL Rwy 13-31 

NE-2, 11 JUN 2026 to 09 JUL 2026

NE-2, 11 JUN 2026 to 09 JUL 2026