

ATIS 317.6
 CLNC DEL
 254.4
 GND CON
 119.6 336.4
 TOWER
 127.075 360.2
 OCEANA APP/DEP CON
 123.9 266.8

TACAN required

Rwy	Knots	60	120	180	240	300	360
23L (A)	V/V(fpm)	805	1610	2415	3220	4025	4830
23R (A)	V/V(fpm)	683	1366	2049	2732	3415	4098
32L/R(B)	V/V(fpm)	280	560	840	1120	1400	1680

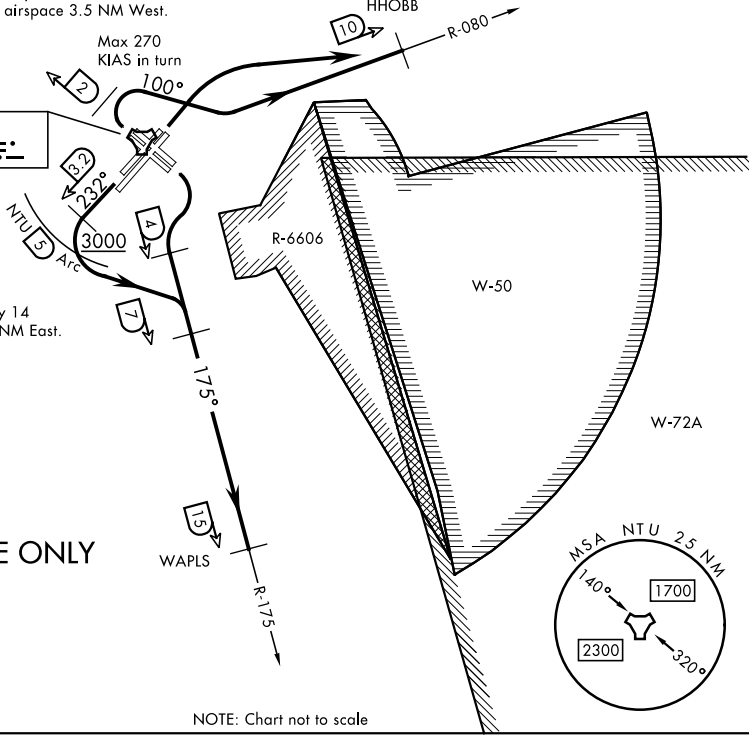
ATC Climb Rate

- (A) to 3000
- (B) to 460

CAUTION: Departures from Rwy 32 must avoid Norfolk airspace 3.5 NM West.

CAUTION: Turns off Rwy 14 must avoid R-6606 3.5 NM East.

OCEANA
 Chan 113 NTU



NE-3, 11 JUN 2026 to 09 JUL 2026

NE-3, 11 JUN 2026 to 09 JUL 2026

DEPARTURE ROUTE DESCRIPTION

- TAKEOFF RWY 5L/R:** Climbing right turn to intercept NTU TACAN R-080 to HHOBB.
 - TAKEOFF RWY 14L/R:** Climbing right turn to intercept NTU TACAN R-175 no later than 4 DME to WAPLS.
 - TAKEOFF RWY 23L/R:** Climb via heading 232°, crossing NTU TACAN 3.2 DME turn left to intercept NTU R-175 no later than 7 DME to WAPLS. Cross NTU 5 DME Arc at or above 3000.
 - TAKEOFF RWY 32L/R:** Climbing right turn heading 100° within NTU TACAN 2 DME, intercept NTU R-080 to HHOBB. Do not exceed 270 KIAS on initial turn.
- ...Thence maintain 4000 or ATC assigned altitude.