

VIRGINIA BEACH, VIRGINIA

# HI-TACAN Z RWY 23L/R

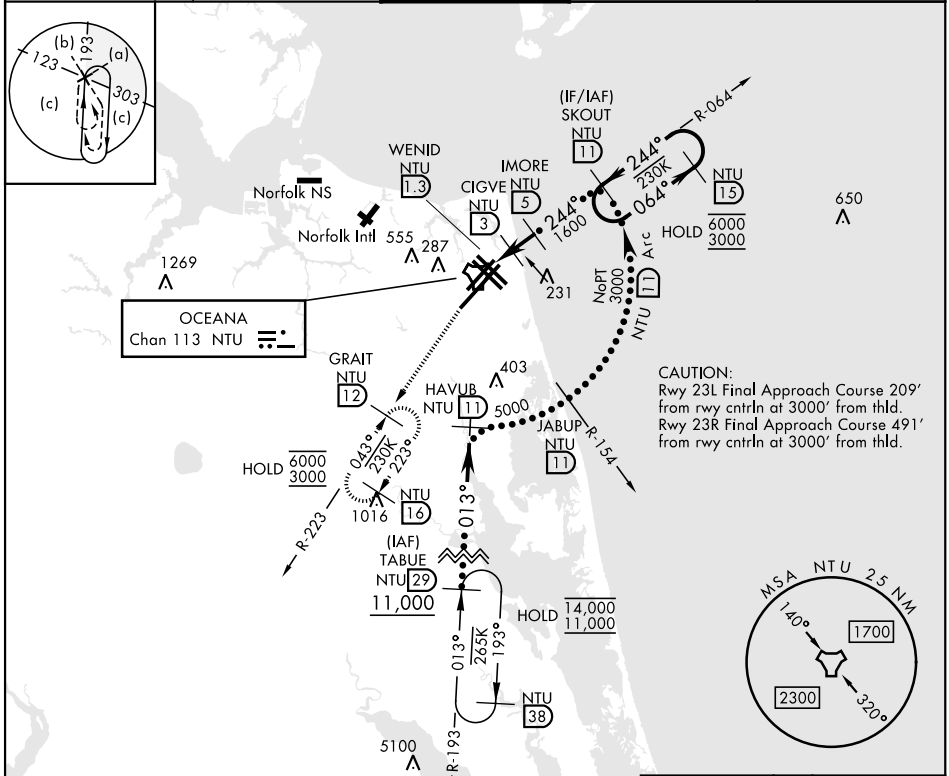
[USN]  
OCEANA NAS (APOLLO SOUCEK FLD) (KNTU)

TACAN NTU Chan 113	APCH CRS 244°	Rwy Idg 23L <b>12,001</b> 23R <b>7999</b>	23L TDZE <b>21</b> 23R TDZE <b>20</b>
		Arprt Elev <b>22</b>	

ALSF-1  
\* When ALS inop, increase CAT CDE vis to 1½ miles

MISSED APPROACH: Climb to 3000 via R-064 to NTU TACAN, then via R-223 to GRAIT and hold.

ATIS <b>317.6</b>	APP/DEP CON <b>123.9 266.8</b>	TOWER <b>127.075 360.2</b>	GND CON <b>119.6 336.4</b>	ASR/PAR
----------------------	-----------------------------------	-------------------------------	-------------------------------	---------

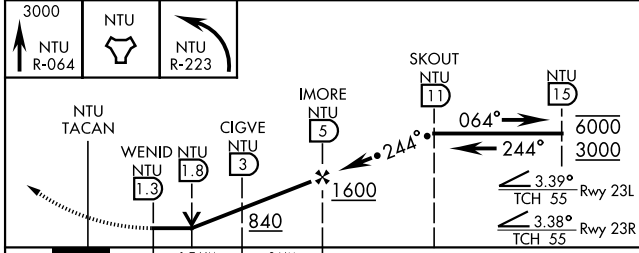


CAUTION:  
Rwy 23L Final Approach Course 209° from rwy enrtln at 3000' from thld.  
Rwy 23R Final Approach Course 491° from rwy enrtln at 3000' from thld.

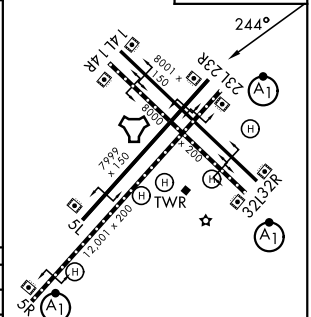
NE-3, 11 JUN 2026 to 09 JUL 2026

NE-3, 11 JUN 2026 to 09 JUL 2026

EMERG SAFE ALT 100 NM 6100



ELEV 22	TDZE 23L 21	TDZE 23R 20
---------	-------------	-------------



CATEGORY	C	D	E
S-23L*	440-¾	419 (500-¾)	
S-23R	440-1½	420 (500-1½)	
CIRCLING	600-1½ 578 (600-1½)	600-2 578 (600-2)	900-3 878 (900-3)

HIRL all Rwy  
Wave-Off Lgt all Rwy

VIRGINIA BEACH, VIRGINIA

36°49'N-76°02'W

OCEANA NAS (APOLLO SOUCEK FLD) (KNTU)

Amtd 1 12JUN25

# HI-TACAN Z RWY 23L/R