

# HI-TACAN Z RWY 5R

TACAN NTU Chan 113	APCH CRS 043°	Rwy Idg 12,001	TDZE 19	Arprt Elev 22
-----------------------	------------------	-------------------	------------	------------------

[USN]

OCEANA NAS (APOLLO SOUCEK FLD) (KNTU)

ALSF-1
 

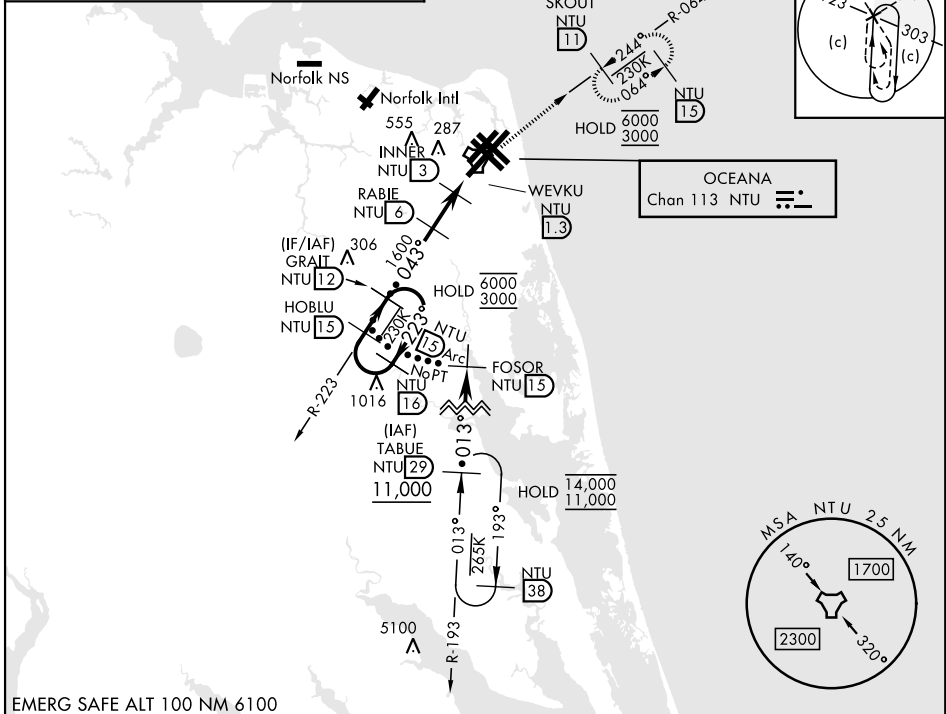
 MISSED APPROACH: Climb to 3000 via R-223 to NTU TACAN, then via R-064 to SKOUT and hold.

\* When ALS inop, increase CAT CDE vis to 1½ miles.

ATIS 317.6	APP/DEP CON 123.9 266.8	TOWER 127.075 360.2	GND CON 119.6 336.4	ASR/PAR
---------------	----------------------------	------------------------	------------------------	---------

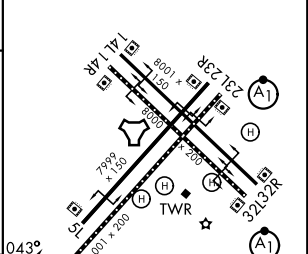
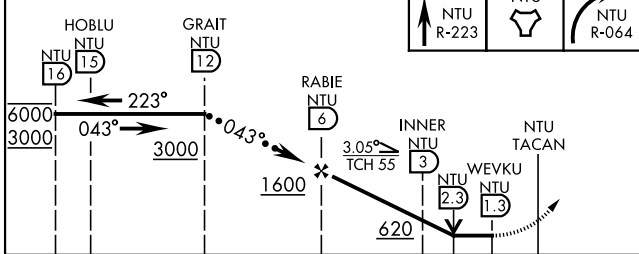
Knots	60	120	180	240	300	360
V/V(fpm)	210	420	630	840	1050	1260

ATC climb of 210 ft/NM to 3000



EMERG SAFE ALT 100 NM 6100

ELEV	22	TDZE	19
------	----	------	----



CATEGORY	C	D	E
S-5R *	420-¾	401	(400-¾)
CIRCLING	600-1½ 578 (600-1½)	600-2 578 (600-2)	900-3 878 (900-3)

VIRGINIA BEACH, VIRGINIA      36° 49'N-76° 02'W      OCEANA NAS (APOLLO SOUCEK FLD) (KNTU)

Amdt 1 12JUN25

# HI-TACAN Z RWY 5R

NE-3, 11 JUN 2026 to 09 JUL 2026

NE-3, 11 JUN 2026 to 09 JUL 2026

HIRL all Rwy  
Wave-Off Lgt all Rwy