

VIRGINIA BEACH, VIRGINIA

RNAV (GPS) RWY 23L

WAAS CH 67300 W23A	APCH CRS 232°	Rwy ldg TDZE 21 Arpt Elev 22	12,001
---------------------------------	-------------------------	--	---------------

(USN)

OCEANA NAS (APOLLO SOUCEK FLD) (KNTU)

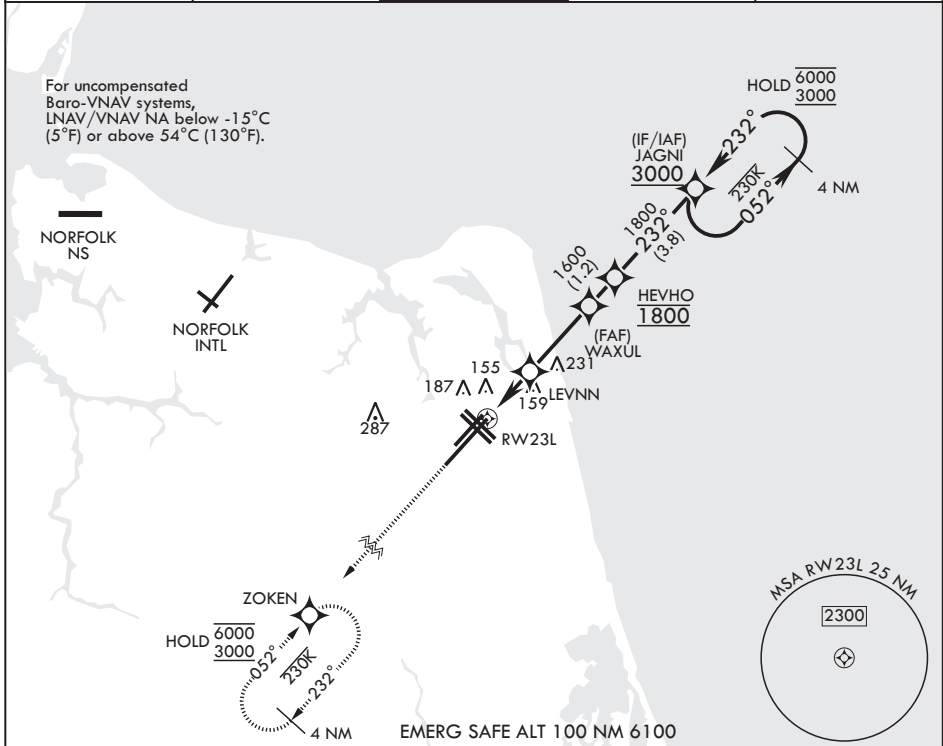
RNP APCH-GPS



MISSED APPROACH: Climb to 3000 direct ZOKEN and hold.

▼ * When ALS inop, increase vis to 3/4 mile.
 ** When ALS inop, increase vis to 7/8 mile.
 *** When ALS inop, increase CAT AB vis to 1 mile; CAT CD vis to 1 1/8 miles.

ATIS 317.6	APP CON/DEP CON 123.9 266.8	TOWER 127.075 360.2	GND CON 119.6 336.4	ASR/PAR
----------------------	---------------------------------------	-------------------------------	-------------------------------	---------



3000 ZOKEN	JAGNI 4 NM Holding Pattern	ELEV 22	TDZE 21	
RW23L	HEVHO 1800	GP 3.00° TCH 55		
1.1 NM to RW23L	WAXUL 1600			
2 NM	LEVNN 700			
2.8 NM				
CATEGORY	A	B	C	D
LPV DA*	221-1/2	200	(200-1/2)	
LNAV/VNAV DA**	324-1/2	303	(400-1/2)	
LNAV MDA***	420-1/2	399 (400-1/2)	420-5/8	399 (400-5/8)
CIRCLING	500-1	478 (500-1)	600-1 1/2 578 (600-1 1/2)	600-2 578 (600-2)

HIRL all rwys
Wave-Off Lights all rwys

VIRGINIA BEACH, VIRGINIA

36°49'N - 76°02'W OCEANA NAS (APOLLO SOUCEK FLD) (KNTU)

Amdt 5 12JUN25

RNAV (GPS) RWY 23L

NE-3, 11 JUN 2026 to 09 JUL 2026

NE-3, 11 JUN 2026 to 09 JUL 2026