

VIRGINIA BEACH, VIRGINIA

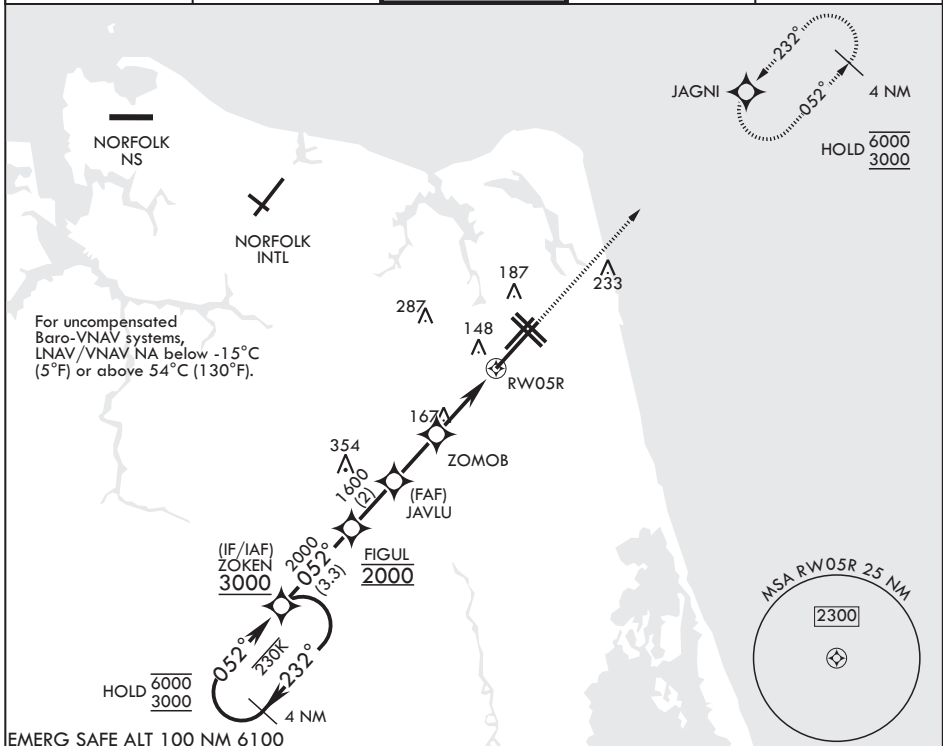
RNAV (GPS) RWY 5R

WAAS CH 69870 W05B	APCH CRS 052°	Rwy ldg TDZE 19 Arprt Elev 22
---------------------------------	-------------------------	---

(USN) OCEANA NAS (APOLLO SOUCEK FLD) (KNTU)

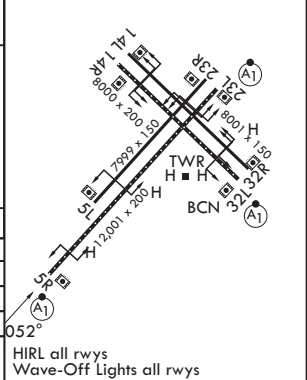
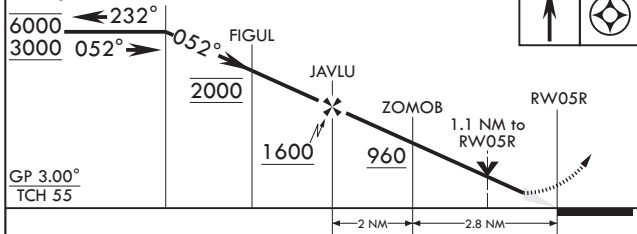
RNP APCH-GPS	ALSF-1	MISSED APPROACH: Climb to 3000 direct JAGNI and hold. Continue climb in hold to 3000.
<p>▼ * When ALS inop increase vis to 3/4 mile. ** When ALS inop increase vis to 7/8 mile. *** When ALS inop, increase CAT AB vis to 1 mile; CAT CD vis to 1 1/8 miles.</p>		

ATIS 317.6	APP CON/DEP CON 123.9 266.8	TOWER 127.075 360.2	GND CON 119.6 336.4	ASR/PAR
----------------------	---------------------------------------	-------------------------------	-------------------------------	---------



EMERG SAFE ALT 100 NM 6100

4 NM Holding Pattern ZOKEN	3000	JAGNI	ELEV 22	TDZE 19
----------------------------	------	-------	---------	---------



CATEGORY	A	B	C	D
LPV DA*	219-1/2	200	(200-1/2)	
LNAV/VNAV DA**	333-1/2	314	(400-1/2)	
LNAV MDA***	420-1/2	401 (400-1/2)	420-3/4	401 (400-3/4)
CIRCLING	500-1	478 (500-1)	600-1 1/2 578 (600-1 1/2)	600-2 578 (600-2)

VIRGINIA BEACH, VIRGINIA
Amdt 5 12JUN25

36°49'N - 76°02'W OCEANA NAS (APOLLO SOUCEK FLD) (KNTU)

RNAV (GPS) RWY 5R

NE-3, 11 JUN 2026 to 09 JUL 2026

NE-3, 11 JUN 2026 to 09 JUL 2026