

VIRGINIA BEACH, VIRGINIA

TACAN Y RWY 5R

TACAN NTU Chan 113	APCH CRS 043°	Rwy Idg TDZE Arprt Elev	12,001 19 22
------------------------------	-------------------------	-------------------------------	---

[USN]

OCEANA NAS (APOLLO SOUCEK FLD) (KNTU)

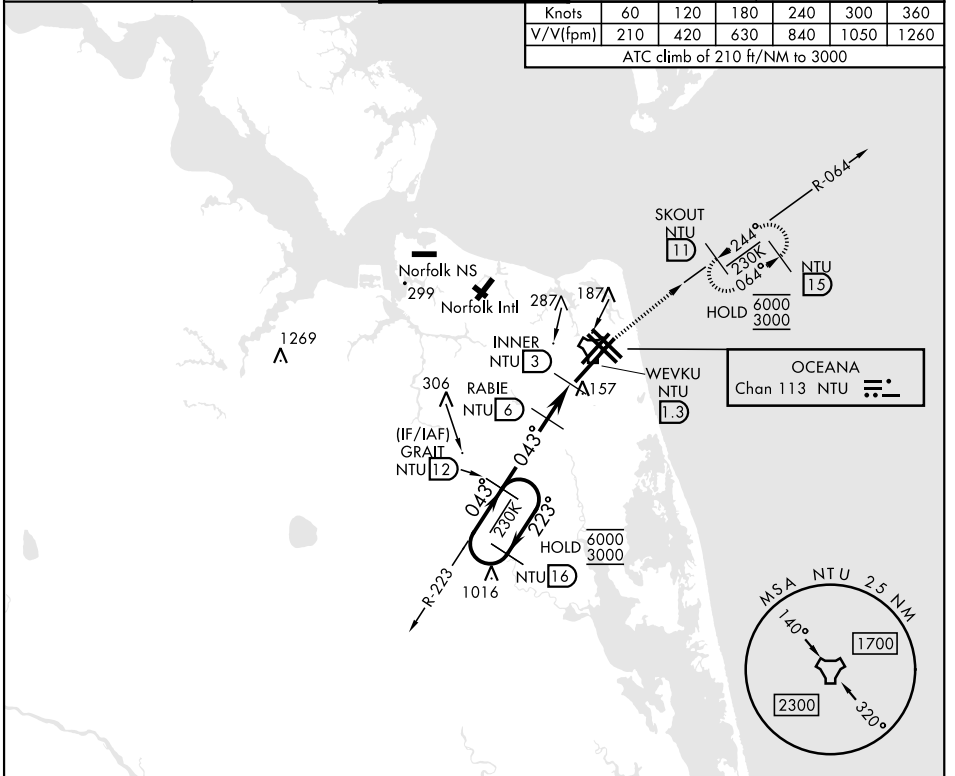
▼ * When ALS inop, increase CAT AB vis to 1 mile, CAT CD vis to 1½ miles.



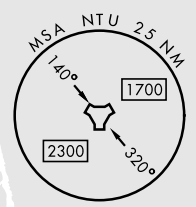
MISSED APPROACH: Climb to 3000 via R-223 to NTU TACAN then via R-064 to SKOUT and hold.

ATIS 317.6	APP/DEP CON 123.9 266.8	TOWER 127.075 360.2	GND CON 119.6 336.4	ASR/PAR
----------------------	-----------------------------------	-------------------------------	-------------------------------	---------

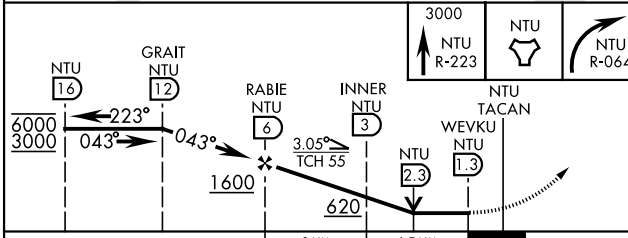
Knots	60	120	180	240	300	360
V/V(fpm)	210	420	630	840	1050	1260
ATC climb of 210 ft/NM to 3000						



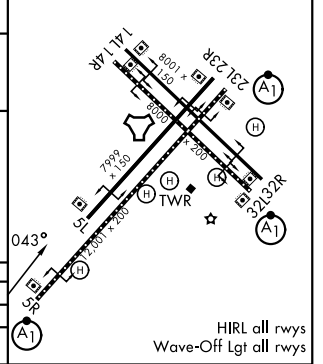
OCEANA
Chan 113 NTU



EMERG SAFE ALT 100 NM 6100



ELEV	22	TDZE	19
------	----	------	----



CATEGORY	A	B	C	D
S-5R *	420-½	401 (400-½)	420-¾	401 (400-¾)
CIRCLING	500-1	478 (500-1)	600-1½ 578 (600-1½)	600-2 578 (600-2)

HIRL all rwy's
Wave-Off Lgt all rwy's

VIRGINIA BEACH, VIRGINIA

36° 49' N-76° 02' W

OCEANA NAS (APOLLO SOUCEK FLD) (KNTU)

Amdt 1 12JUN25

TACAN Y RWY 5R

NE-3, 11 JUN 2026 to 09 JUL 2026

NE-3, 11 JUN 2026 to 09 JUL 2026