

WAAS CH 58320 W32A	APP CRS 319°	Rwy Ldg TDZE Apt Elev	4401 1312 1324
--	------------------------	-----------------------------	---

RNAV (GPS) RWY 32

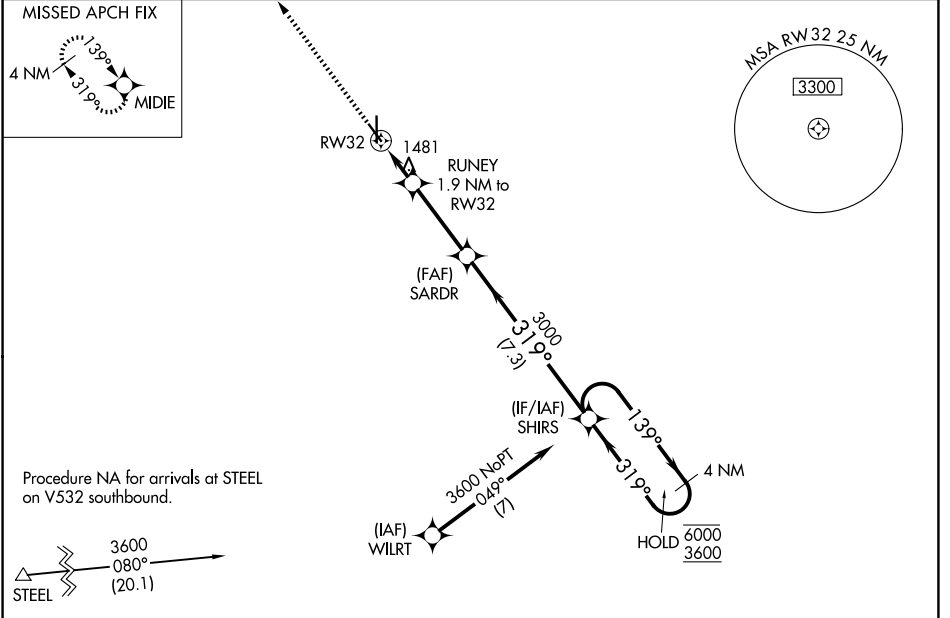
BEATRICE MUNI (BIE)

RNP APCH - GPS.

⚠ Rwy 32 helicopter visibility reduction below ¼ SM NA.
⚠ For uncompensated Baro-VNAV systems, LNAV/VNAV NA below -17°C or above 54°C.

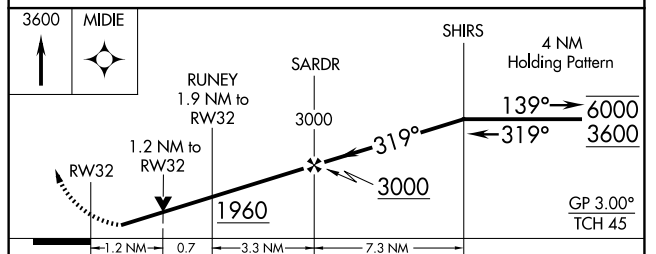
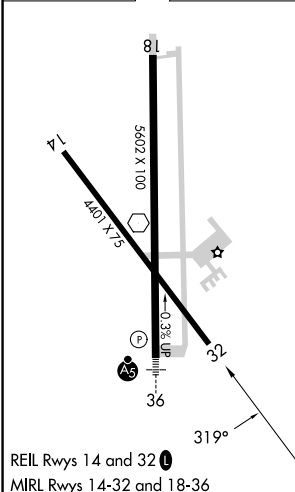
MISSED APPROACH: Climb to 3600 direct MIDIE and hold.

AWOS-3 125.325	MINNEAPOLIS CENTER 126.4 317.7	UNICOM 122.8 (CTAF)
--------------------------	--	-------------------------------



Procedure NA for arrivals at STEEL on V532 southbound.

ELEV 1324	D	TDZE 1312
-----------	----------	-----------



CATEGORY	A	B	C	D
LPV DA		1562-1	250 (300-1)	
LNAV/VNAV DA		1685-1	373 (400-1)	
LNAV MDA	1740-1	428 (500-1)	1740-1¼	428 (500-1¼)
CIRCLING	1820-1	496 (500-1)	2000-2 676 (700-2)	2100-2½ 776 (800-2½)

NC-2, 11 JUN 2026 to 09 JUL 2026

NC-2, 11 JUN 2026 to 09 JUL 2026