

LOC/DME I-REE 111.35 Chan 50 (Y)	APP CRS 316°	Rwy Ldg 7302 TDZE 806 Apt Elev 808
---	------------------------	---

ILS or LOC RWY 32

SOUTHERN WISCONSIN RGNL (JVL)

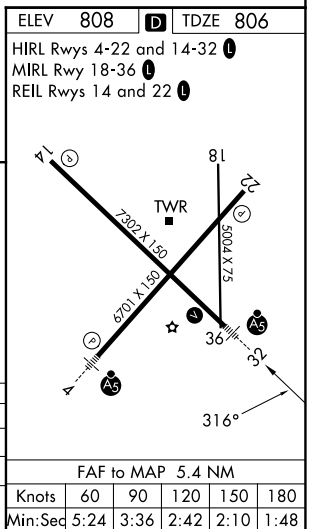
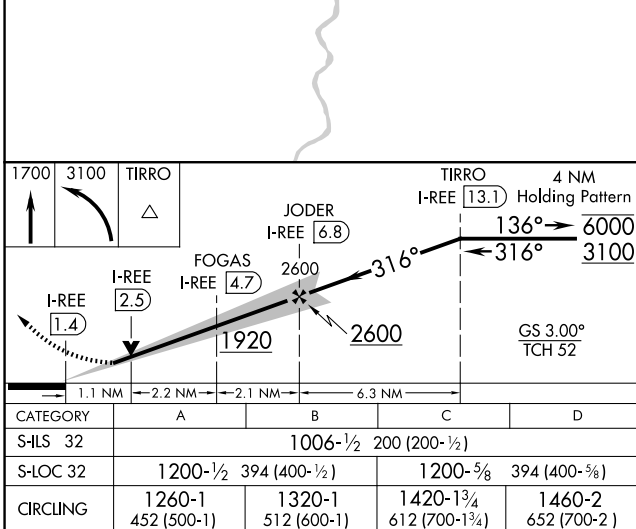
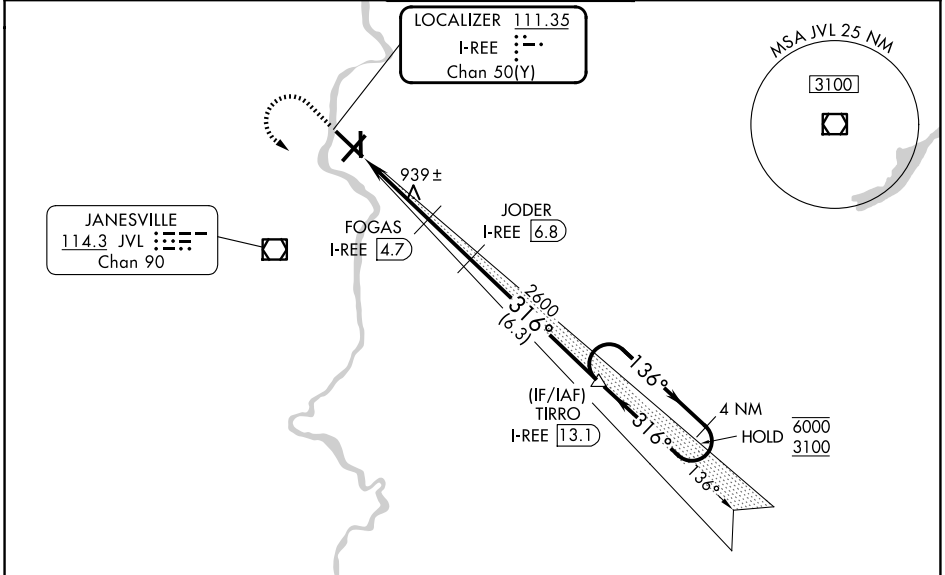
DME required. RNP APCH - GPS.

⚠ Circling Rwy 18 NA at night. When local altimeter setting not received, use Chicago/Rockford Intl altimeter setting and increase DA to 1075, increase all MDA 80 feet. Increase S-LOC 32 Cats C and D visibility $\frac{3}{8}$ SM, and Circling Cats C/D $\frac{1}{4}$ SM. VDP NA when using Chicago/Rockford Intl altimeter setting. For inop ALS when using Chicago/Rockford Intl altimeter setting, increase S-ILS 32 visibility all Cats to $\frac{3}{8}$ SM and S-LOC 32 visibility Cats C/D to $\frac{1}{8}$ SM.



MISSED APPROACH: Climb to 1700 then climbing left turn to 3100 direct TIRRO and hold.

ATIS 128.25	ROCKFORD APP CON 121.0 327.0	JANESVILLE TOWER ★ 118.8 (CTAF) 225.4	GND CON 121.65	UNICOM 122.95
-----------------------	--	---	--------------------------	-------------------------



EC-3, 11 JUN 2026 to 09 JUL 2026

EC-3, 11 JUN 2026 to 09 JUL 2026

FAC TO MAP 5.4 NM	Knots	60	90	120	150	180
	Min:Seq	5:24	3:36	2:42	2:10	1:48