

| | | | |
|--|------------------------|-----------------------------|---|
| WAAS CH 40417 W22A | APP CRS 224° | Rwy Ldg TDZE Apr Elev | 6701 805 808 |
|--|------------------------|-----------------------------|---|

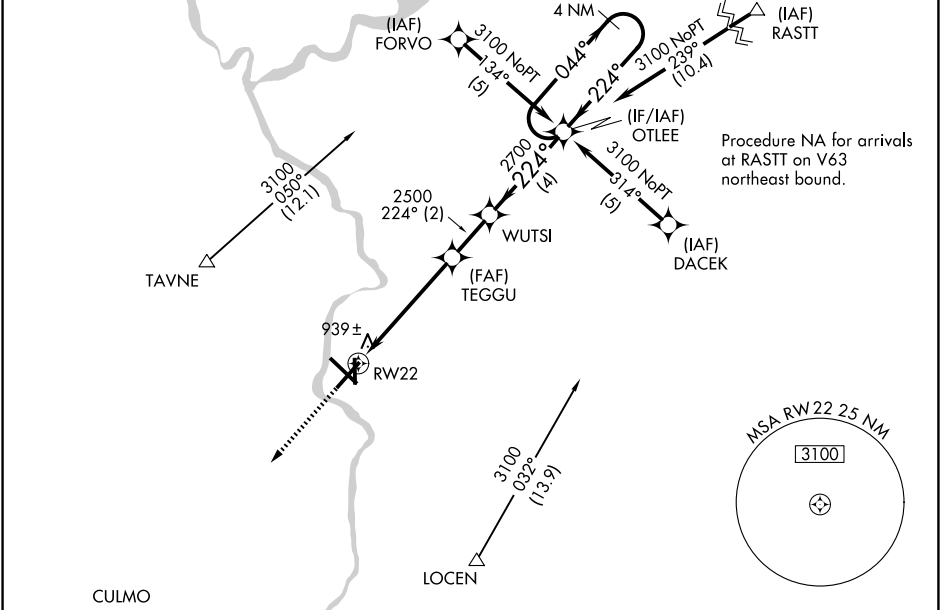
RNAV (GPS) RWY 22

SOUTHERN WISCONSIN RGNL (JVL)

⚠ Circling to Rwy 18 NA at night. Baro-VNAV NA when using Rockford altimeter setting. For uncompensated Baro-VNAV systems, LNAV/VNAV NA below -16°C (4°F) or above 47°C (116°F). DME/DME RNP-0.3 NA. Visibility reduction by helicopters NA. When local altimeter setting not received, use Rockford altimeter setting and increase LPV DA to 1189 feet, LNAV/VNAV DA to 1313 feet, and all MDAs 80 feet; increase LPV all Cats visibility ¼ SM, LNAV/VNAV all Cats visibility ½ SM, LNAV Cats C/D visibility ¾ SM and Circling Cats C/D visibility ¼ SM. VDP NA with Rockford altimeter setting.

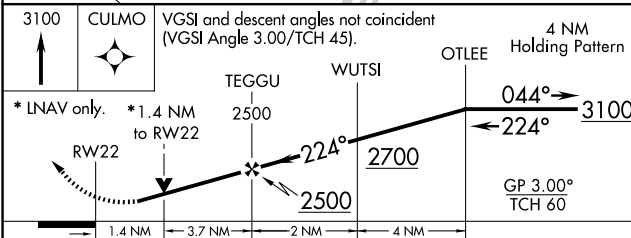
MISSED APPROACH: Climb to 3100 direct CULMO and hold.

| | | | | |
|-----------------------|--|---|--------------------------|-------------------------|
| ATIS 128.25 | ROCKFORD APP CON 121.0 327.0 | JANESVILLE TOWER ★ 118.8 (CTAF) 225.4 | GND CON 121.65 | UNICOM 122.95 |
|-----------------------|--|---|--------------------------|-------------------------|

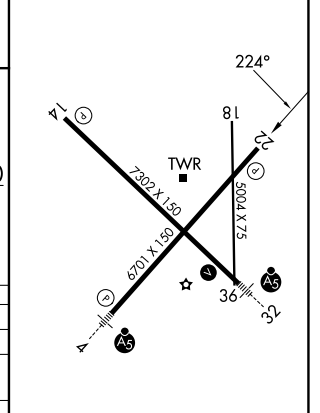


Procedure NA for arrivals at RASTT on V63 northeast bound.

| | |
|----------|-------------------|
| ELEV 808 | D TDZE 805 |
|----------|-------------------|



| CATEGORY | A | B | C | D |
|--------------|---------|-------------|-------------------------|-------------------------|
| LPV DA | 1120-1 | | 315 (400-1) | |
| LNAV/VNAV DA | 1244-1½ | | 439 (500-1½) | |
| LNAV MDA | 1320-1 | 515 (600-1) | 1320-1½ 515 (600-1½) | 1320-1¾ 515 (600-1¾) |
| CIRCLING | 1320-1 | 512 (600-1) | 1420-1¾ 612 (700-1¾) | 1460-2 652 (700-2) |



REIL Rwy 14 and 22
MIRL Rwy 18-36
HIRL Rwy 4-22 and 14-32

EC-3, 11 JUN 2026 to 09 JUL 2026

EC-3, 11 JUN 2026 to 09 JUL 2026