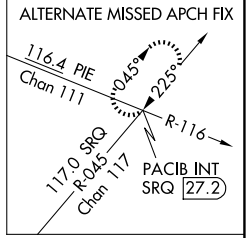
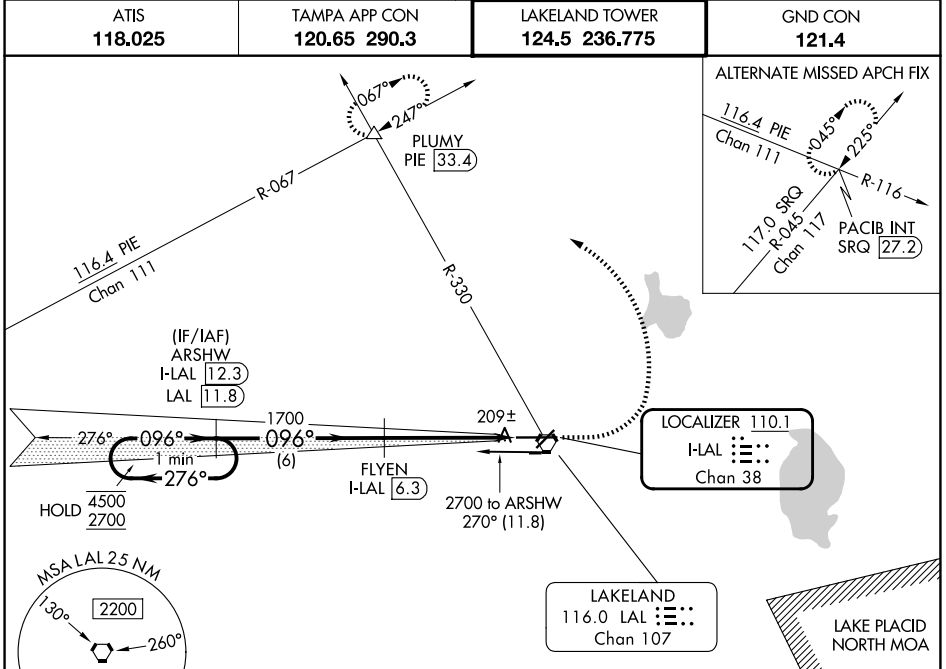


LOC/DME I-LAL 110.1 Chan 38	APP CRS 096°	Rwy Ldg 8500 TDZE 132 Apt Elev 142
---	------------------------	---

ILS RWY 10 (CAT II & III)

LAKELAND LINDER INTL (LAL)

DME required.		ALSF-2	MISSED APPROACH: Climb to 1000 then climbing left turn to 2000 on heading 292° and on LAL VORTAC R-330 to PLUMY INT/PIE 33.4 DME and hold.
ATIS 118.025	TAMPA APP CON 120.65 290.3	LAKELAND TOWER 124.5 236.775	GND CON 121.4



SE-3, 11 JUN 2026 to 09 JUL 2026

SE-3, 11 JUN 2026 to 09 JUL 2026

ELEV 142	TDZE 132
----------	----------

