

WAAS CH <b>77805</b> <b>W23A</b>	APP CRS <b>231°</b>	Rwy Ldg TDZE <b>141</b> Apt Elev <b>142</b>
--	------------------------	---

# RNAV (GPS) RWY 23

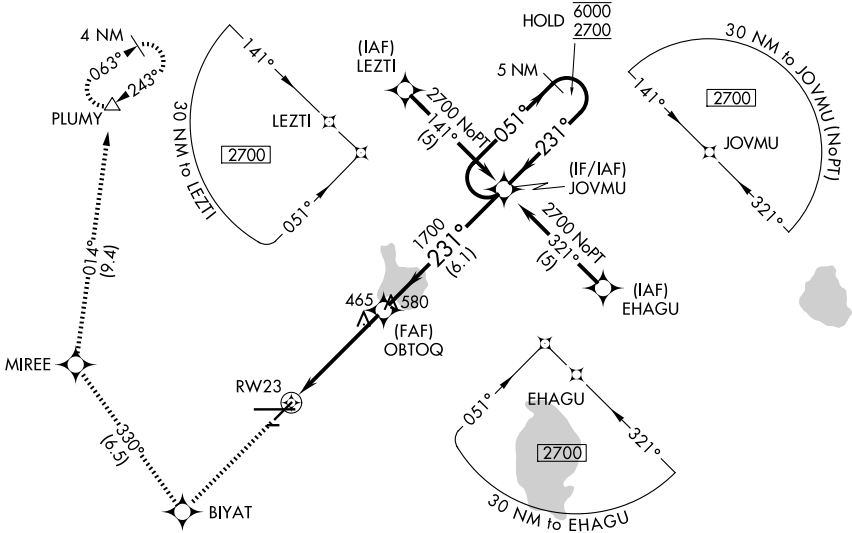
LAKELAND LINDER INTL (LAL)

RNP APCH.

▼ For uncompensated Baro-VNAV systems, LNAV/VNAV NA below -15°C or above 54°C. When local altimeter setting not received, use Plant City altimeter setting: increase LPV DA to 444 feet; increase LNAV/VNAV DA to 540 feet; increase all MDAs 20 feet and LNAV Cat C/D and Circling Cat C visibility 1/8 SM. Baro-VNAV and VDP NA when using Plant City altimeter setting. Rwy 23 helicopter visibility reduction below 3/4 SM NA. Circling NA to Rwy's 8 and 26.

MISSED APPROACH: Climb to 2000 direct BIYAT and right turn on track 330° to MIREE then on track 014° to PLUMY and hold.

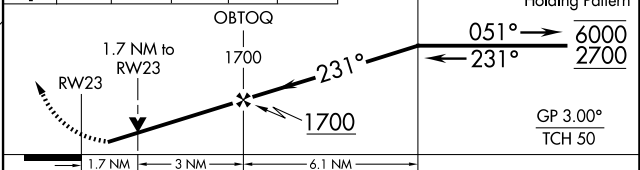
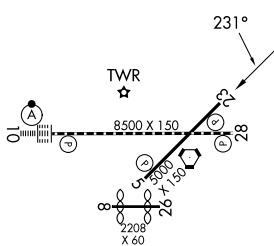
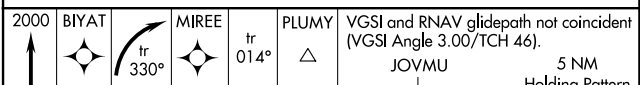
ATIS <b>118.025</b>	TAMPA APP CON <b>120.65 290.3</b>	LAKELAND TOWER <b>124.5 236.775</b>	GND CON <b>121.4</b>
------------------------	--------------------------------------	--	-------------------------



SE-3, 11 JUN 2026 to 09 JUL 2026

SE-3, 11 JUN 2026 to 09 JUL 2026

ELEV 142	<b>D</b>	TDZE 141
----------	----------	----------



CATEGORY	A	B	C	D
LPV DA	426-1 285 (300-1)			
LNAV/VNAV DA	522-1¼ 381 (400-1¼)			
LNAV MDA	720-1 579 (600-1)	720-1½ 579 (600-1½)	720-1¾ 579 (600-1¾)	720-1¾ 579 (600-1¾)
CIRCLING	720-1 578 (600-1)	720-1½ 578 (600-1½)	840-2¼ 698 (700-2¼)	

TDZ/CL Rwy 10  
HIRL Rwy's 5-23 and 10-28