

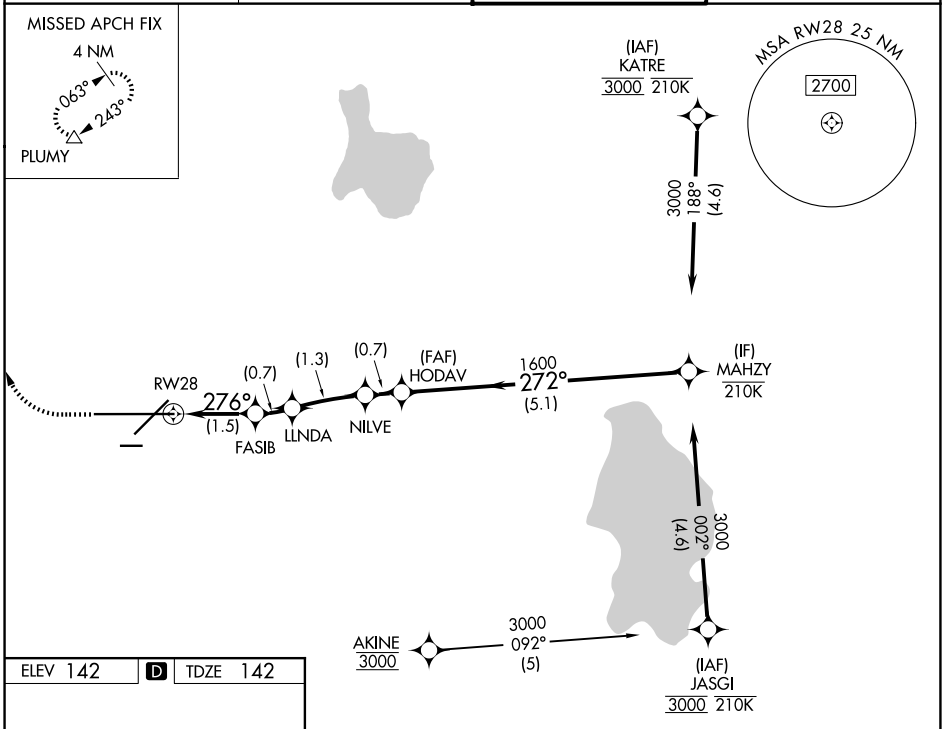
APP CRS 276°	Rwy Ldg TDZE Apt Elev	8500 142 142
------------------------	-----------------------------	---

RNAV (RNP) Z RWY 28

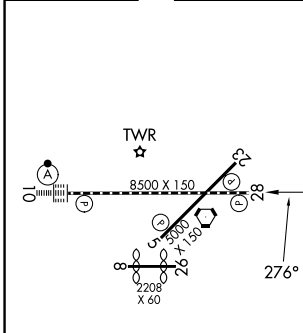
LAKELAND LINDER INTL (LAL)

RNP AR APCH - GPS. For uncompensated Baro-VNAV systems, procedure NA below -15°C or above 54°C.		MISSED APPROACH: Climb to 600 then climbing right turn to 2000 direct PLUMY and hold.
---	--	--

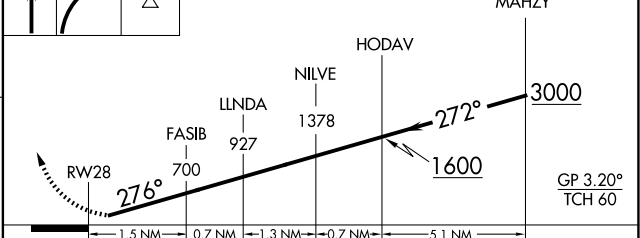
ATIS 118.025	TAMPA APP CON 120.65 290.3	LAKELAND TOWER 124.5 236.775	GND CON 121.4
------------------------	--------------------------------------	--	-------------------------



ELEV 142	D	TDZE 142
----------	----------	----------



600 2000 PLUMY VGSi and RNAV glidepath not coincident (VGSi Angle 3.00/TCH 71).



CATEGORY	A	B	C	D
----------	---	---	---	---

RNP 0.30 DA	507/55 365 (400-1)			
-------------	--------------------	--	--	--

TDZ/CL Rwy 10
 HIRL Rwys 5-23 and 10-28

AUTHORIZATION REQUIRED

SE-3, 11 JUN 2026 to 09 JUL 2026

SE-3, 11 JUN 2026 to 09 JUL 2026