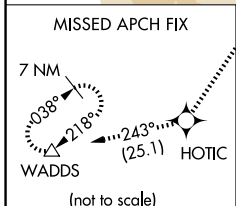
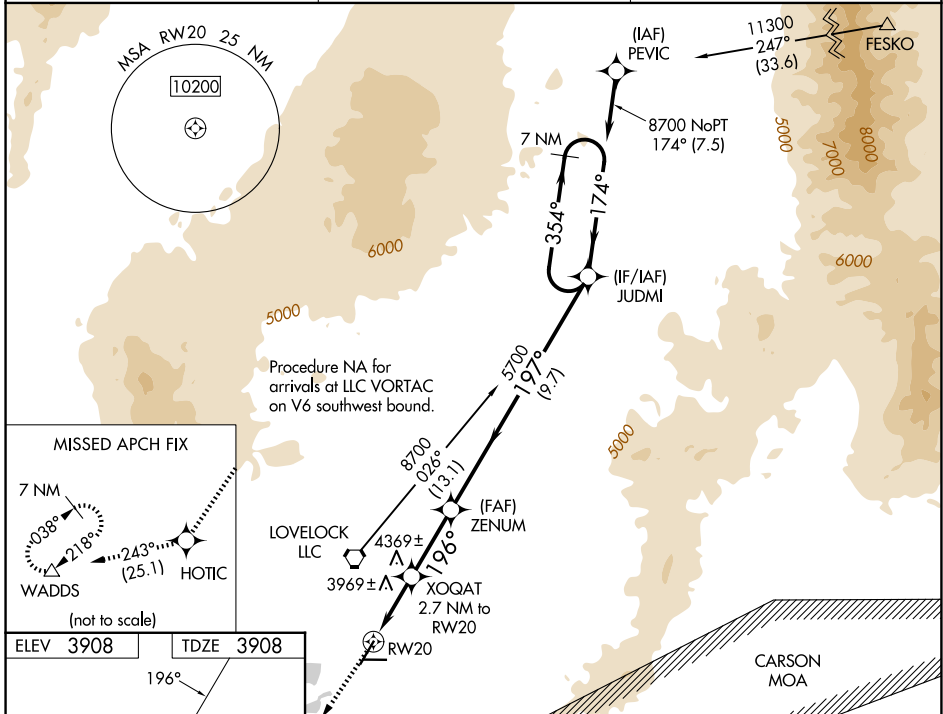


WAAS CH 78240 W20A	APP CRS 196°	Rwy Ldg 5529 TDZE 3908 Apt Elev 3908
--	------------------------	--

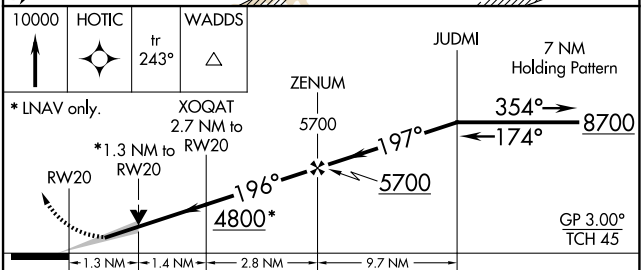
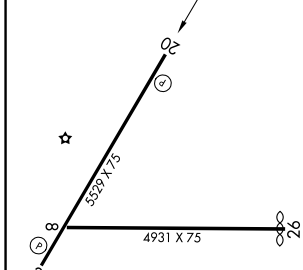
RNAV (GPS) RWY 20

DERBY FLD (L.O.L.)

<p>For uncompensated Baro-VNAV systems, LNAV/VNAV NA below -19°C (-2°F) or above 52°C (127°F). Circling NA northwest of Rwy 2-20. DME/DME RNP-0.3 NA.</p>	<p>MISSED APPROACH: Climb to 10000 direct HOTIC and on track 243° to WADDS and hold.</p>	
	<p>ASOS 120.675</p>	<p>OAKLAND CENTER 128.8 285.5</p>



ELEV 3908	TDZE 3908
------------------	------------------



CATEGORY	A	B	C	D
LPV DA		4158-1	250 (300-1)	
LNAV/VNAV DA		4249-1 1/8	341 (400-1 1/8)	
LNAV MDA	4360-1	452 (500-1)	4360-1 3/8	452 (500-1 3/8)
CIRCLING	4360-1	452 (500-1)	4540-1 3/4 632 (700-1 3/4)	4680-2 1/2 772 (800-2 1/2)

REIL Rwy 2 and 20
MIRL Rwy 2-20

SW-4, 11 JUN 2026 to 09 JUL 2026

SW-4, 11 JUN 2026 to 09 JUL 2026