

WAAS CH 61399 W10A	APP CRS 108°	Rwy Ldg 6500 TDZE 337 Apt Elev 342
--	------------------------	---

RNAV (GPS) RWY 10

CAPE GIRARDEAU RGNL (CGI)

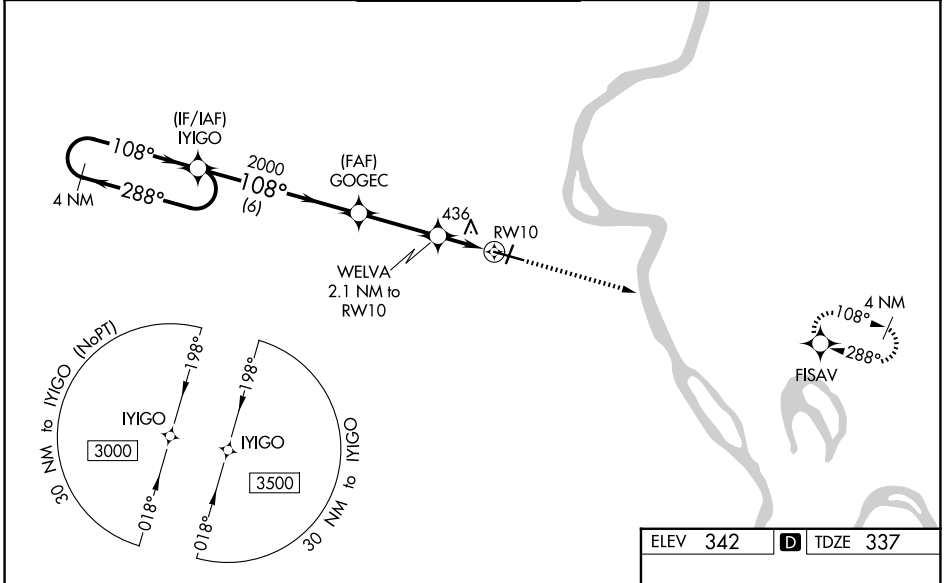
RNP APCH - GPS.

⚠ For uncompensated Baro-VNAV systems, LNAV/VNAV NA below -17°C or above 54°C. When local altimeter setting not received, use Cairo altimeter setting and increase LPV DA to 585 feet, LNAV/VNAV DA to 761 feet, and all visibilities 1/8 SM. Increase all MDAs 60 feet and LNAV Cat C/D visibility 1/8 SM, and Circling Cats C/D visibility to 1/4 SM. Baro-VNAV and VDP NA when using Cairo Rgnl altimeter setting. For inop ALS, increase LNAV/VNAV visibility all Cats and LNAV visibility Cat C/D to 1 SM. For inop ALS, when using Cairo altimeter setting, increase LNAV/VNAV all Cats and LNAV Cat C/D visibility to 1 SM.

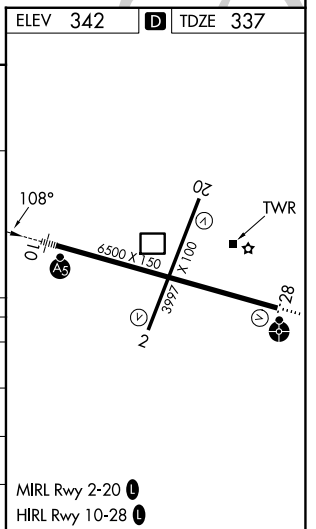
MALSR

MISSED APPROACH:
Climb to 3000 direct FISAV and hold.

ASOS 120.55	MEMPHIS CENTER 133.65 292.15	CAPE GIRARDEAU TOWER ★ 125.525 (CTAF) 0	GND CON 124.7	UNICOM 122.95
-----------------------	--	---	-------------------------	-------------------------



4 NM Holding Pattern		MIGO	GOGEC	WELVA 2.1 NM to RWY 10	3000	FISAV
3000		288°	108°	2000	1060	
GP 3.00°		6 NM		3 NM	1.1 NM	1 NM
TCH 54						
CATEGORY	A	B	C	D		
LPV DA		537-1/2	200 (200-1/2)			
LNAV/VNAV DA		713-5/8	376 (400-5/8)			
LNAV MDA	700-1/2	363 (400-1/2)	700-5/8	363 (400-5/8)		
CIRCLING	880-1 538 (600-1)	960-1 618 (700-1)	1000-13/4 658 (700-13/4)	1080-21/4 738 (800-21/4)		



NC-3, 11 JUN 2026 to 09 JUL 2026

NC-3, 11 JUN 2026 to 09 JUL 2026