

WAAS CH <b>93832</b> <b>W02A</b>	APP CRS <b>023°</b>	Rwy Ldg TDZE <b>342</b> Apt Elev <b>342</b>
--	------------------------	---

# RNAV (GPS) RWY 2

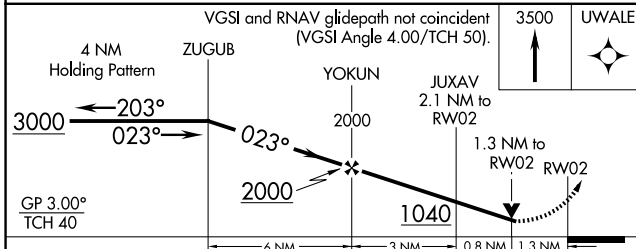
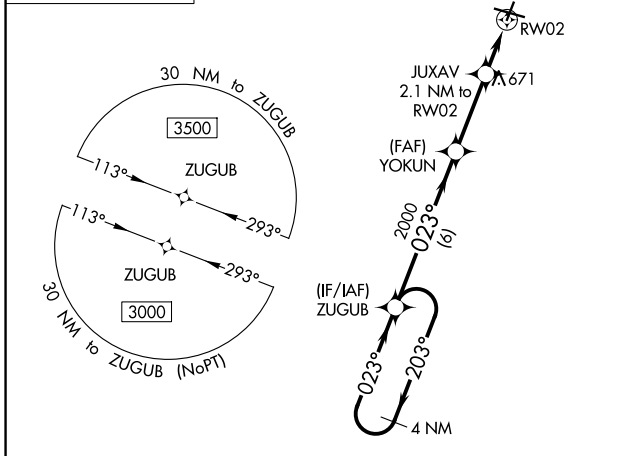
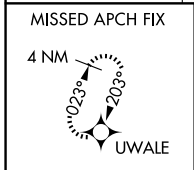
CAPE GIRARDEAU RGNL (CGI)

RNP APCH - GPS.

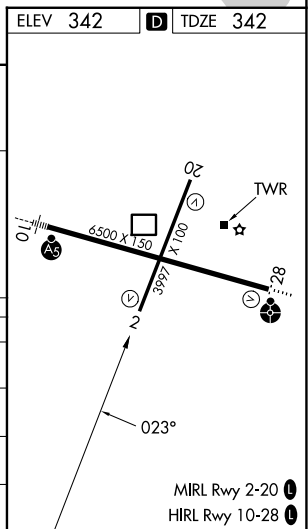
**⚠** For uncompensated Baro-VNAV systems, LNAV/VNAV NA below -17°C or above 54°C. When local altimeter setting not received, use Cairo altimeter setting and increase LPV DA to 849 feet, LNAV/VNAV DA to 905 feet, and all visibilities ¼ SM. Increase all MDAs 60 feet and LNAV visibility Cat C/D ¼ SM, and Circling visibility Cat C/D ¼ SM. Rwy 2 helicopter visibility reduction below ¾ SM NA. Baro-VNAV and VDP NA when using Cairo Rgnl altimeter setting.

MISSED APPROACH: Climb to 3500 direct UWALE and hold, continue climb-in-hold to 3500.

ASOS <b>120.55</b>	MEMPHIS CENTER <b>133.65 292.15</b>	CAPE GIRARDEAU TOWER * <b>125.525</b> (CTAF) <b>1</b>	GND CON <b>124.7</b>	UNICOM <b>122.95</b>
-----------------------	--	--	-------------------------	-------------------------



CATEGORY	A	B	C	D
LPV DA		801-1 <sup>3</sup> / <sub>8</sub>	459 (500-1 <sup>3</sup> / <sub>8</sub> )	
LNAV/VNAV DA		857-1 <sup>3</sup> / <sub>8</sub>	515 (600-1 <sup>3</sup> / <sub>8</sub> )	
LNAV MDA	940-1	598 (600-1)	940-1 <sup>3</sup> / <sub>4</sub>	598 (600-1 <sup>3</sup> / <sub>4</sub> )
CIRCLING	940-1 598 (600-1)	960-1 618 (700-1)	1000-1 <sup>3</sup> / <sub>4</sub> 658 (700-1 <sup>3</sup> / <sub>4</sub> )	1080-2 <sup>1</sup> / <sub>4</sub> 738 (800-2 <sup>1</sup> / <sub>4</sub> )



NC-3, 11 JUN 2026 to 09 JUL 2026

NC-3, 11 JUN 2026 to 09 JUL 2026